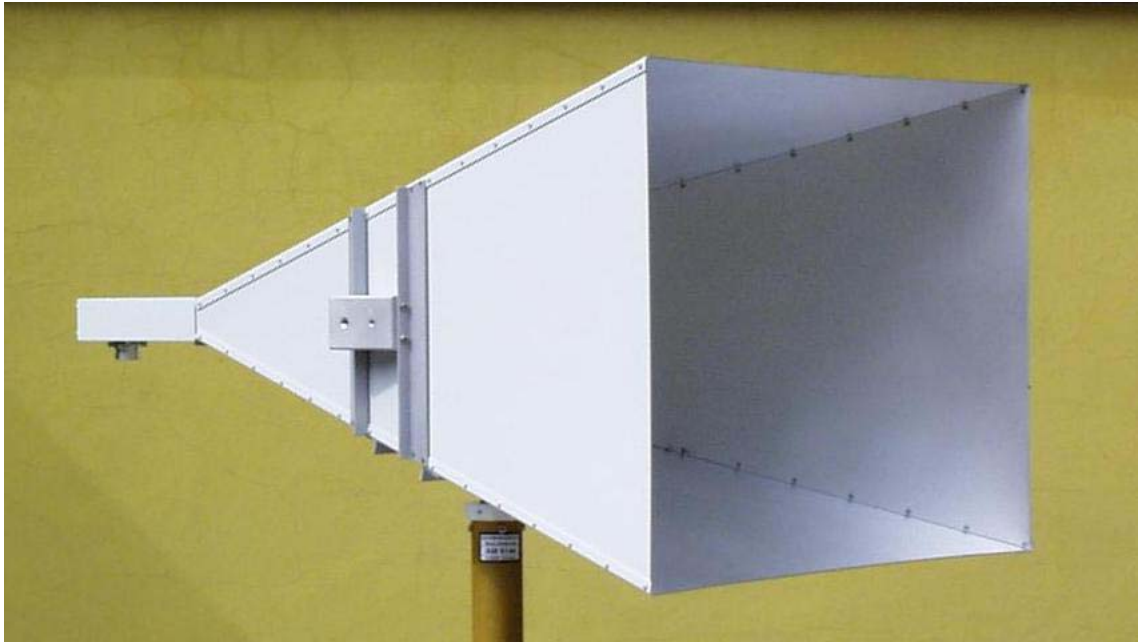


SCHWARZBECK MESS - ELEKTRONIK

An der Klinge 29 D-69250 Schönau Tel.: 06228/1001 Fax.: (49)6228/1003

Standard Hornantenne HA 9250-24 Standard Horn Antenna HA 9250-24



Beschreibung:

Linear polarisierte Standard
Pyramidenhornantenne mit 7/16
Koaxialanschluß für höchste
Belastbarkeit.

Technische Daten:

Frequenzbereich (nominell): 2-4 GHz
Frequenzbereich (nutzbar): 1.9-4.6 GHz
Gewinn: ≈ 20 dBi
Antennen-Wandlungsmaß: 17...21 dB/m
Stehwellenverhältnis: typ. < 1.5
Vor- Rückmaß: typ. > 27 dB
3 dB Halbwertsbreite E-Ebene: 16°
3 dB Halbwertsbreite H-Ebene: 15°
6 dB Öffnungswinkel E-Ebene: 22°
6 dB Öffnungswinkel H-Ebene: 24°
Anschlußbuchse: 7/16
Max. Eingangsleistung: 2 kW (2 GHz)
1 kW (4 GHz),

Befestigungsgewinde:

Abmessungen:

Gewicht:

Material:

$3/8"$, $1/4"$
600 x 446 x 952 mm
5.8 kg
Aluminium

Description:

*Linear polarized standard gain horn
antenna with coaxial 7/16 connector
for highest power handling.*

Specifications:

*Frequency Range (nominal):
Frequency Range (useable):
Gain:
Antenna Factor:
VSWR:
Front to Back Ratio:
Half Power Beamwidth (E-Plane):
Half Power Beamwidth (H-Plane):
6 dB Beamwidth (E-Plane):
6 dB Beamwidth (H-Plane):
Connector:
Max. Input Power:*

Mounting Threads:

Dimensions:

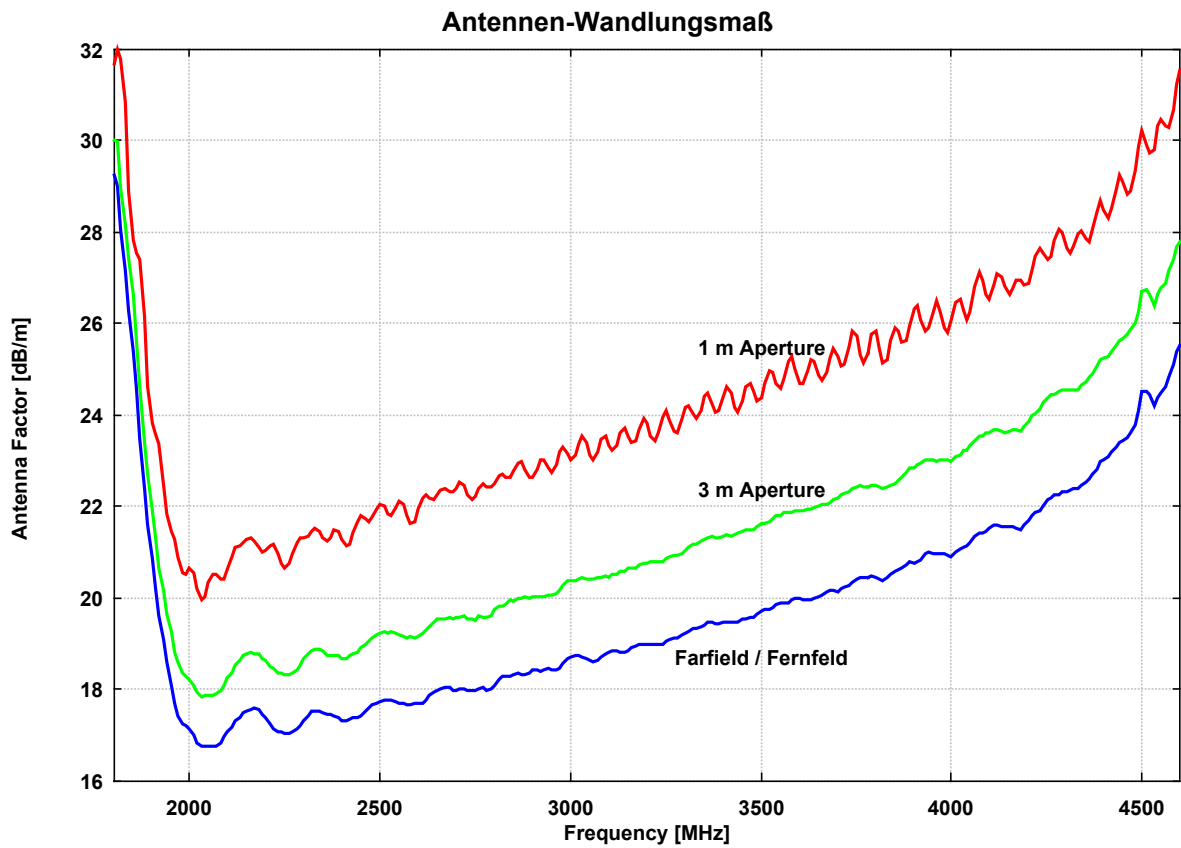
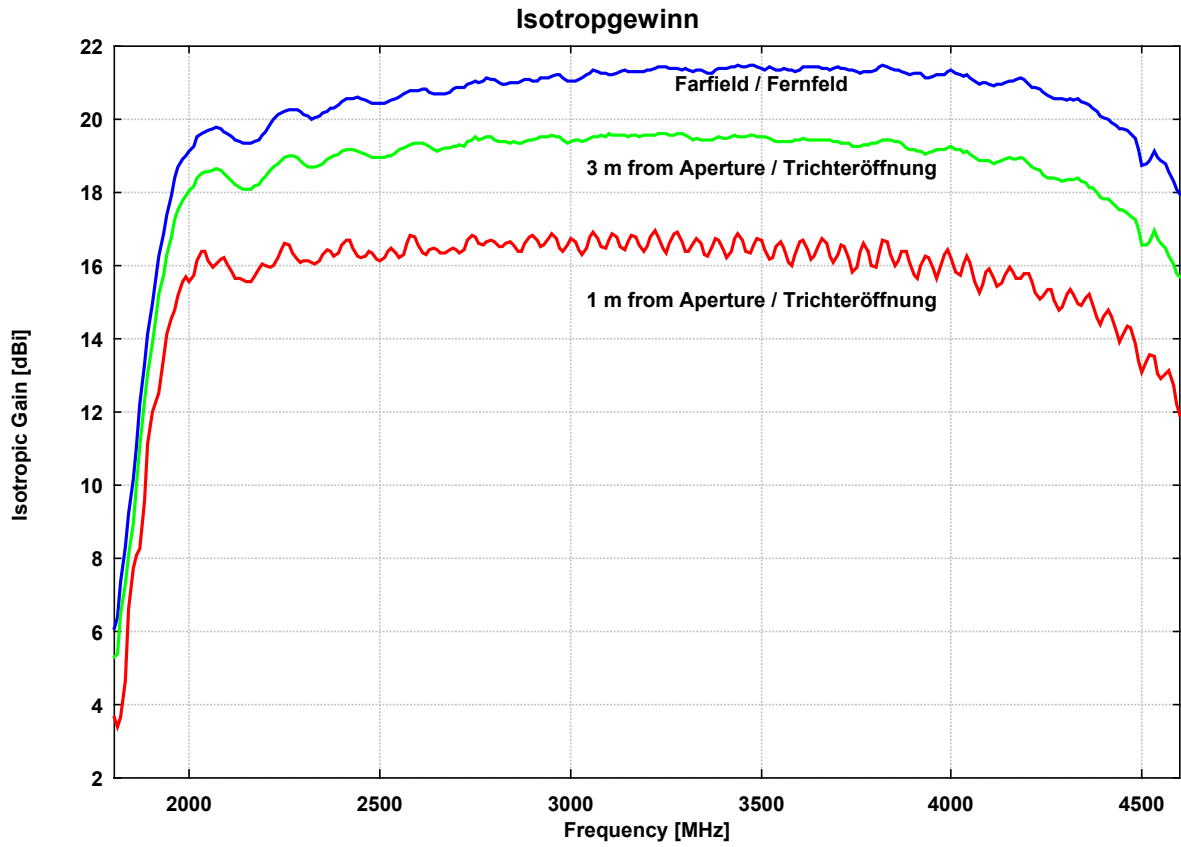
Weight:

Material:

SCHWARZBECK MESS - ELEKTRONIK

An der Klinge 29 D-69250 Schönau Tel.: 06228/1001 Fax.: (49)6228/1003

Standard Hornantenne HA 9250-24 Standard Horn Antenna HA 9250-24



SCHWARZBECK MESS - ELEKTRONIK

An der Klinge 29 D-69250 Schönau Tel.: 06228/1001 Fax.: (49)6228/1003

Standard Hornantenne HA 9250-24 Standard Horn Antenna HA 9250-24

Frequency	Gain(Isotr.) Farfield	Ant.-Factor Farfield	Gain(Isotr.) 3 m Aperture	Ant.-Factor 3 m Aperture	Gain(Isotr.) 1 m Aperture	Ant.-Factor 1 m Aperture
MHz	dB	dB/m	dB	dB/m	dB	dB/m
1900.00	14.93	20.87	13.88	21.91	11.97	23.83
1910.00	15.62	20.22	14.52	21.32	12.26	23.58
1920.00	16.26	19.63	15.22	20.66	12.52	23.37
1930.00	16.85	19.08	15.76	20.17	13.47	22.47
1940.00	17.38	18.59	16.32	19.66	14.14	21.84
1950.00	17.93	18.09	16.77	19.25	14.58	21.44
1960.00	18.38	17.68	17.24	18.82	14.77	21.30
1970.00	18.70	17.41	17.52	18.59	15.20	20.90
1980.00	18.92	17.24	17.80	18.36	15.59	20.56
1990.00	19.01	17.19	17.92	18.28	15.68	20.52
2000.00	19.12	17.12	18.04	18.20	15.59	20.65
2010.00	19.28	17.01	18.19	18.09	15.73	20.55
2020.00	19.50	16.82	18.39	17.93	16.12	20.21
2030.00	19.63	16.74	18.52	17.85	16.41	19.96
2040.00	19.67	16.74	18.56	17.86	16.37	20.04
2050.00	19.69	16.76	18.59	17.86	16.12	20.33
2060.00	19.75	16.74	18.62	17.88	15.96	20.53
2070.00	19.78	16.76	18.65	17.89	16.03	20.51
2080.00	19.75	16.83	18.61	17.97	16.19	20.39
2090.00	19.66	16.96	18.54	18.08	16.22	20.40
2100.00	19.59	17.08	18.42	18.25	16.05	20.62
2110.00	19.52	17.18	18.33	18.37	15.82	20.88
2120.00	19.44	17.31	18.20	18.54	15.66	21.09
2130.00	19.39	17.40	18.16	18.63	15.64	21.15
2140.00	19.36	17.47	18.09	18.74	15.62	21.21
2150.00	19.34	17.53	18.09	18.78	15.57	21.30
2160.00	19.35	17.56	18.09	18.82	15.59	21.32
2170.00	19.38	17.57	18.17	18.78	15.70	21.25
2180.00	19.45	17.54	18.23	18.76	15.90	21.09
2190.00	19.57	17.46	18.35	18.68	16.03	20.99
2200.00	19.68	17.39	18.44	18.63	16.02	21.05
2210.00	19.86	17.25	18.60	18.51	15.96	21.15
2220.00	20.00	17.15	18.69	18.46	15.99	21.16
2230.00	20.12	17.07	18.81	18.37	16.20	20.98
2240.00	20.17	17.05	18.88	18.35	16.45	20.77
2250.00	20.23	17.04	18.95	18.31	16.59	20.67
2260.00	20.27	17.04	18.99	18.32	16.54	20.76
2270.00	20.28	17.06	18.99	18.35	16.36	20.98
2280.00	20.26	17.12	18.94	18.44	16.18	21.20
2290.00	20.21	17.21	18.87	18.55	16.10	21.31
2300.00	20.14	17.31	18.77	18.68	16.13	21.32
2310.00	20.08	17.41	18.72	18.77	16.15	21.34
2320.00	20.02	17.51	18.68	18.85	16.09	21.44
2330.00	20.05	17.52	18.68	18.89	16.05	21.52
2340.00	20.08	17.52	18.73	18.88	16.14	21.46
2350.00	20.17	17.47	18.81	18.83	16.33	21.31
2360.00	20.24	17.44	18.93	18.75	16.45	21.23
2370.00	20.29	17.43	18.96	18.75	16.38	21.33
2380.00	20.33	17.42	19.01	18.75	16.28	21.48
2390.00	20.42	17.37	19.07	18.72	16.34	21.45
2400.00	20.50	17.32	19.15	18.67	16.55	21.27
2410.00	20.55	17.31	19.19	18.67	16.72	21.14
2420.00	20.55	17.34	19.18	18.72	16.70	21.19

SCHWARZBECK MESS - ELEKTRONIK

An der Klinge 29 D-69250 Schönau Tel.: 06228/1001 Fax.: (49)6228/1003

Standard Hornantenne HA 9250-24 Standard Horn Antenna HA 9250-24

Frequency	Gain(Isotr.) Farfield	Ant.-Factor Farfield	Gain(Isotr.) 3 m Aperture	Ant.-Factor 3 m Aperture	Gain(Isotr.) 1 m Aperture	Ant.-Factor 1 m Aperture
MHz	dB	dB/m	dB	dB/m	dB	dB/m
2430.00	20.56	17.37	19.17	18.76	16.50	21.43
2440.00	20.60	17.37	19.15	18.81	16.28	21.68
2450.00	20.59	17.41	19.11	18.90	16.21	21.80
2460.00	20.53	17.50	19.06	18.97	16.28	21.75
2470.00	20.49	17.58	19.01	19.06	16.39	21.68
2480.00	20.45	17.66	18.98	19.13	16.34	21.77
2490.00	20.44	17.70	18.94	19.20	16.18	21.96
2500.00	20.44	17.74	18.95	19.23	16.12	22.06
2510.00	20.45	17.76	18.96	19.25	16.20	22.01
2520.00	20.49	17.75	19.01	19.24	16.40	21.84
2530.00	20.53	17.75	19.01	19.27	16.46	21.82
2540.00	20.58	17.73	19.09	19.22	16.35	21.97
2550.00	20.64	17.71	19.17	19.18	16.23	22.12
2560.00	20.71	17.68	19.23	19.15	16.33	22.06
2570.00	20.76	17.66	19.27	19.14	16.62	21.80
2580.00	20.78	17.67	19.31	19.15	16.83	21.62
2590.00	20.79	17.70	19.35	19.14	16.80	21.68
2600.00	20.81	17.71	19.36	19.16	16.58	21.94
2610.00	20.85	17.70	19.34	19.21	16.35	22.20
2620.00	20.83	17.75	19.31	19.28	16.33	22.25
2630.00	20.76	17.86	19.25	19.37	16.43	22.19
2640.00	20.71	17.94	19.17	19.48	16.49	22.16
2650.00	20.70	17.99	19.15	19.54	16.43	22.25
2660.00	20.71	18.01	19.17	19.55	16.35	22.37
2670.00	20.70	18.05	19.21	19.54	16.36	22.39
2680.00	20.75	18.03	19.22	19.57	16.45	22.33
2690.00	20.82	17.99	19.28	19.53	16.48	22.33
2700.00	20.89	17.96	19.29	19.56	16.44	22.41
2710.00	20.88	18.00	19.30	19.58	16.35	22.53
2720.00	20.89	18.02	19.29	19.63	16.45	22.47
2730.00	20.96	17.98	19.40	19.54	16.70	22.24
2740.00	21.02	17.96	19.45	19.53	16.83	22.14
2750.00	21.05	17.96	19.50	19.51	16.79	22.21
2760.00	21.02	18.02	19.44	19.60	16.62	22.41
2770.00	21.03	18.03	19.48	19.59	16.57	22.50
2780.00	21.14	17.97	19.52	19.58	16.65	22.45
2790.00	21.12	18.01	19.52	19.62	16.69	22.44
2800.00	21.09	18.08	19.42	19.74	16.64	22.52
2810.00	20.99	18.21	19.39	19.81	16.53	22.67
2820.00	20.95	18.27	19.39	19.83	16.53	22.69
2830.00	20.97	18.29	19.40	19.85	16.62	22.64
2840.00	20.99	18.29	19.34	19.94	16.64	22.64
2850.00	21.00	18.32	19.38	19.93	16.54	22.78
2860.00	21.01	18.34	19.36	19.98	16.40	22.95
2870.00	21.06	18.31	19.37	20.00	16.39	22.99
2880.00	21.09	18.32	19.39	20.01	16.59	22.82
2890.00	21.08	18.36	19.44	20.00	16.80	22.64
2900.00	21.05	18.42	19.46	20.01	16.84	22.62
2910.00	21.07	18.43	19.48	20.01	16.68	22.82
2920.00	21.13	18.40	19.50	20.03	16.51	23.02
2930.00	21.14	18.42	19.51	20.04	16.55	23.01
2940.00	21.13	18.46	19.53	20.06	16.75	22.84
2950.00	21.20	18.41	19.56	20.06	16.87	22.75
2960.00	21.23	18.42	19.54	20.11	16.73	22.91

SCHWARZBECK MESS - ELEKTRONIK

An der Klinge 29 D-69250 Schönau Tel.: 06228/1001 Fax.: (49)6228/1003

Standard Hornantenne HA 9250-24 Standard Horn Antenna HA 9250-24

Frequency	Gain(Isotr.) Farfield	Ant.-Factor Farfield	Gain(Isotr.) 3 m Aperture	Ant.-Factor 3 m Aperture	Gain(Isotr.) 1 m Aperture	Ant.-Factor 1 m Aperture
MHz	dB	dB/m	dB	dB/m	dB	dB/m
2970.00	21.23	18.45	19.50	20.18	16.49	23.19
2980.00	21.14	18.56	19.45	20.26	16.41	23.30
2990.00	21.07	18.66	19.37	20.36	16.57	23.16
3000.00	21.07	18.69	19.40	20.36	16.75	23.01
3010.00	21.07	18.72	19.42	20.37	16.67	23.12
3020.00	21.08	18.74	19.43	20.39	16.45	23.37
3030.00	21.14	18.70	19.40	20.45	16.30	23.54
3040.00	21.21	18.67	19.46	20.42	16.49	23.39
3050.00	21.28	18.62	19.49	20.42	16.77	23.13
3060.00	21.34	18.59	19.52	20.41	16.91	23.02
3070.00	21.32	18.64	19.53	20.44	16.76	23.20
3080.00	21.29	18.71	19.55	20.45	16.52	23.47
3090.00	21.25	18.76	19.54	20.47	16.46	23.56
3100.00	21.23	18.82	19.59	20.46	16.71	23.34
3110.00	21.24	18.84	19.57	20.51	16.87	23.21
3120.00	21.26	18.84	19.57	20.53	16.77	23.33
3130.00	21.31	18.82	19.56	20.57	16.53	23.60
3140.00	21.35	18.80	19.58	20.58	16.45	23.71
3150.00	21.33	18.86	19.54	20.64	16.64	23.55
3160.00	21.31	18.90	19.57	20.65	16.82	23.40
3170.00	21.30	18.94	19.58	20.66	16.80	23.45
3180.00	21.30	18.97	19.54	20.73	16.57	23.70
3190.00	21.30	18.99	19.55	20.75	16.38	23.91
3200.00	21.35	18.97	19.58	20.75	16.51	23.82
3210.00	21.36	18.99	19.57	20.78	16.79	23.56
3220.00	21.40	18.97	19.58	20.79	16.94	23.44
3230.00	21.42	18.98	19.62	20.78	16.77	23.63
3240.00	21.44	19.00	19.63	20.81	16.48	23.96
3250.00	21.42	19.04	19.59	20.87	16.36	24.10
3260.00	21.39	19.09	19.58	20.90	16.61	23.88
3270.00	21.38	19.13	19.57	20.94	16.86	23.65
3280.00	21.40	19.14	19.61	20.93	16.91	23.62
3290.00	21.37	19.19	19.62	20.95	16.66	23.91
3300.00	21.38	19.21	19.57	21.02	16.40	24.19
3310.00	21.36	19.26	19.50	21.12	16.41	24.21
3320.00	21.31	19.34	19.46	21.18	16.62	24.03
3330.00	21.34	19.33	19.49	21.18	16.73	23.93
3340.00	21.34	19.36	19.44	21.26	16.59	24.10
3350.00	21.32	19.40	19.44	21.28	16.32	24.40
3360.00	21.28	19.46	19.42	21.32	16.26	24.48
3370.00	21.29	19.48	19.43	21.34	16.52	24.26
3380.00	21.36	19.44	19.48	21.32	16.74	24.06
3390.00	21.39	19.43	19.51	21.32	16.71	24.11
3400.00	21.38	19.47	19.49	21.36	16.43	24.42
3410.00	21.40	19.47	19.49	21.38	16.23	24.64
3420.00	21.44	19.46	19.53	21.37	16.40	24.50
3430.00	21.46	19.47	19.55	21.38	16.74	24.18
3440.00	21.48	19.47	19.53	21.42	16.87	24.08
3450.00	21.45	19.53	19.53	21.45	16.69	24.29
3460.00	21.45	19.55	19.53	21.47	16.37	24.63
3470.00	21.47	19.56	19.56	21.47	16.34	24.69
3480.00	21.47	19.58	19.56	21.49	16.54	24.52
3490.00	21.42	19.65	19.52	21.55	16.76	24.32
3500.00	21.38	19.72	19.50	21.61	16.72	24.38

SCHWARZBECK MESS - ELEKTRONIK

An der Klinge 29 D-69250 Schönau Tel.: 06228/1001 Fax.: (49)6228/1003

Standard Hornantenne HA 9250-24 Standard Horn Antenna HA 9250-24

Frequency	Gain(Isotr.) Farfield	Ant.-Factor Farfield	Gain(Isotr.) 3 m Aperture	Ant.-Factor 3 m Aperture	Gain(Isotr.) 1 m Aperture	Ant.-Factor 1 m Aperture
MHz	dB	dB/m	dB	dB/m	dB	dB/m
3510.00	21.37	19.75	19.51	21.62	16.44	24.68
3520.00	21.42	19.73	19.49	21.66	16.17	24.98
3530.00	21.39	19.78	19.42	21.75	16.23	24.95
3540.00	21.35	19.85	19.41	21.79	16.51	24.69
3550.00	21.34	19.89	19.40	21.82	16.64	24.58
3560.00	21.38	19.87	19.39	21.86	16.46	24.79
3570.00	21.37	19.90	19.40	21.87	16.10	25.18
3580.00	21.34	19.96	19.41	21.88	16.00	25.30
3590.00	21.33	19.99	19.43	21.90	16.30	25.02
3600.00	21.37	19.98	19.43	21.92	16.64	24.71
3610.00	21.42	19.95	19.47	21.90	16.69	24.68
3620.00	21.44	19.95	19.45	21.94	16.42	24.97
3630.00	21.46	19.96	19.46	21.96	16.19	25.22
3640.00	21.46	19.98	19.46	21.99	16.27	25.17
3650.00	21.44	20.02	19.46	22.01	16.58	24.88
3660.00	21.41	20.08	19.44	22.05	16.74	24.75
3670.00	21.38	20.14	19.46	22.06	16.59	24.92
3680.00	21.37	20.17	19.45	22.09	16.27	25.27
3690.00	21.40	20.16	19.41	22.15	16.09	25.47
3700.00	21.43	20.15	19.40	22.19	16.29	25.30
3710.00	21.40	20.21	19.36	22.24	16.54	25.07
3720.00	21.38	20.25	19.33	22.30	16.51	25.12
3730.00	21.37	20.28	19.33	22.33	16.16	25.49
3740.00	21.35	20.33	19.28	22.40	15.83	25.85
3750.00	21.30	20.40	19.26	22.44	15.95	25.75
3760.00	21.26	20.46	19.26	22.46	16.39	25.33
3770.00	21.30	20.45	19.32	22.42	16.61	25.14
3780.00	21.32	20.45	19.32	22.44	16.41	25.36
3790.00	21.31	20.49	19.33	22.46	16.01	25.79
3800.00	21.36	20.45	19.35	22.46	15.97	25.85
3810.00	21.43	20.41	19.40	22.44	16.36	25.47
3820.00	21.49	20.37	19.45	22.41	16.71	25.15
3830.00	21.46	20.43	19.46	22.43	16.65	25.23
3840.00	21.41	20.50	19.43	22.48	16.29	25.62
3850.00	21.36	20.57	19.41	22.52	16.01	25.92
3860.00	21.35	20.61	19.39	22.56	16.11	25.84
3870.00	21.32	20.66	19.35	22.63	16.37	25.60
3880.00	21.28	20.72	19.24	22.75	16.38	25.62
3890.00	21.24	20.78	19.19	22.83	16.08	25.94
3900.00	21.27	20.77	19.20	22.84	15.72	26.32
3910.00	21.28	20.78	19.15	22.91	15.67	26.39
3920.00	21.25	20.83	19.15	22.94	16.01	26.07
3930.00	21.15	20.96	19.07	23.04	16.27	25.84
3940.00	21.13	21.00	19.11	23.02	16.22	25.91
3950.00	21.19	20.96	19.14	23.02	15.89	26.26
3960.00	21.21	20.96	19.18	22.99	15.67	26.51
3970.00	21.23	20.96	19.16	23.04	15.91	26.29
3980.00	21.24	20.98	19.18	23.03	16.29	25.93
3990.00	21.30	20.93	19.21	23.03	16.44	25.80
4000.00	21.35	20.91	19.26	23.00	16.21	26.05
4010.00	21.29	20.99	19.18	23.10	15.81	26.47
4020.00	21.23	21.07	19.18	23.13	15.75	26.55
4030.00	21.20	21.12	19.11	23.22	16.03	26.30
4040.00	21.21	21.14	19.14	23.21	16.26	26.08

SCHWARZBECK MESS - ELEKTRONIK

An der Klinge 29 D-69250 Schönau Tel.: 06228/1001 Fax.: (49)6228/1003

Standard Hornantenne HA 9250-24 Standard Horn Antenna HA 9250-24

Frequency	Gain(Isotr.) Farfield	Ant.-Factor Farfield	Gain(Isotr.) 3 m Aperture	Ant.-Factor 3 m Aperture	Gain(Isotr.) 1 m Aperture	Ant.-Factor 1 m Aperture
MHz	dB	dB/m	dB	dB/m	dB	dB/m
4050.00	21.15	21.22	19.03	23.34	16.10	26.27
4060.00	21.03	21.36	18.96	23.43	15.57	26.82
4070.00	20.98	21.43	18.85	23.56	15.28	27.13
4080.00	21.00	21.43	18.87	23.56	15.49	26.95
4090.00	21.01	21.44	18.85	23.61	15.83	26.63
4100.00	20.97	21.51	18.85	23.63	15.93	26.55
4110.00	20.92	21.58	18.81	23.69	15.66	26.84
4120.00	20.94	21.58	18.84	23.68	15.42	27.10
4130.00	20.98	21.56	18.88	23.66	15.50	27.04
4140.00	21.02	21.54	18.93	23.63	15.75	26.81
4150.00	21.04	21.54	18.94	23.64	15.94	26.64
4160.00	21.06	21.54	18.91	23.70	15.83	26.77
4170.00	21.11	21.51	18.92	23.70	15.66	26.96
4180.00	21.14	21.50	18.98	23.67	15.67	26.97
4190.00	21.09	21.58	18.91	23.75	15.80	26.86
4200.00	20.98	21.70	18.81	23.87	15.79	26.89
4210.00	20.90	21.81	18.70	24.01	15.56	27.15
4220.00	20.87	21.86	18.67	24.05	15.24	27.49
4230.00	20.85	21.90	18.61	24.13	15.11	27.64
4240.00	20.74	22.02	18.50	24.27	15.20	27.56
4250.00	20.65	22.14	18.41	24.38	15.37	27.42
4260.00	20.61	22.19	18.37	24.44	15.34	27.47
4270.00	20.58	22.24	18.37	24.46	15.02	27.81
4280.00	20.58	22.27	18.34	24.51	14.76	28.09
4290.00	20.55	22.32	18.32	24.55	14.86	28.01
4300.00	20.54	22.34	18.34	24.55	15.22	27.66
4310.00	20.55	22.36	18.36	24.55	15.37	27.54
4320.00	20.54	22.39	18.36	24.57	15.22	27.71
4330.00	20.55	22.40	18.40	24.55	14.97	27.98
4340.00	20.50	22.47	18.31	24.66	14.92	28.05
4350.00	20.45	22.54	18.25	24.74	15.12	27.87
4360.00	20.40	22.61	18.16	24.85	15.22	27.79
4370.00	20.32	22.70	18.13	24.90	14.95	28.08
4380.00	20.23	22.82	17.99	25.06	14.58	28.47
4390.00	20.09	22.98	17.86	25.21	14.37	28.70
4400.00	20.06	23.03	17.82	25.27	14.60	28.49
4410.00	20.00	23.11	17.81	25.30	14.80	28.31
4420.00	19.93	23.20	17.72	25.41	14.62	28.51
4430.00	19.85	23.30	17.63	25.52	14.22	28.93
4440.00	19.76	23.41	17.53	25.64	13.92	29.24
4450.00	19.75	23.44	17.51	25.68	14.09	29.10
4460.00	19.69	23.52	17.45	25.76	14.36	28.85
4470.00	19.60	23.63	17.34	25.89	14.31	28.92
4480.00	19.48	23.77	17.24	26.00	13.88	29.37
4490.00	19.18	24.09	17.00	26.26	13.39	29.87
4500.00	18.76	24.52	16.57	26.72	13.07	30.22
4510.00	18.79	24.51	16.54	26.76	13.37	29.93
4520.00	18.88	24.44	16.67	26.65	13.59	29.73
4530.00	19.14	24.21	16.94	26.40	13.53	29.81
4540.00	18.98	24.38	16.74	26.63	13.03	30.33
4550.00	18.89	24.49	16.61	26.77	12.92	30.46
4560.00	18.78	24.62	16.50	26.90	13.05	30.35
4570.00	18.57	24.85	16.26	27.16	13.12	30.30
4580.00	18.33	25.10	16.04	27.40	12.75	30.68

SCHWARZBECK MESS - ELEKTRONIK

An der Klinge 29 D-69250 Schönau Tel.: 06228/1001 Fax.: (49)6228/1003

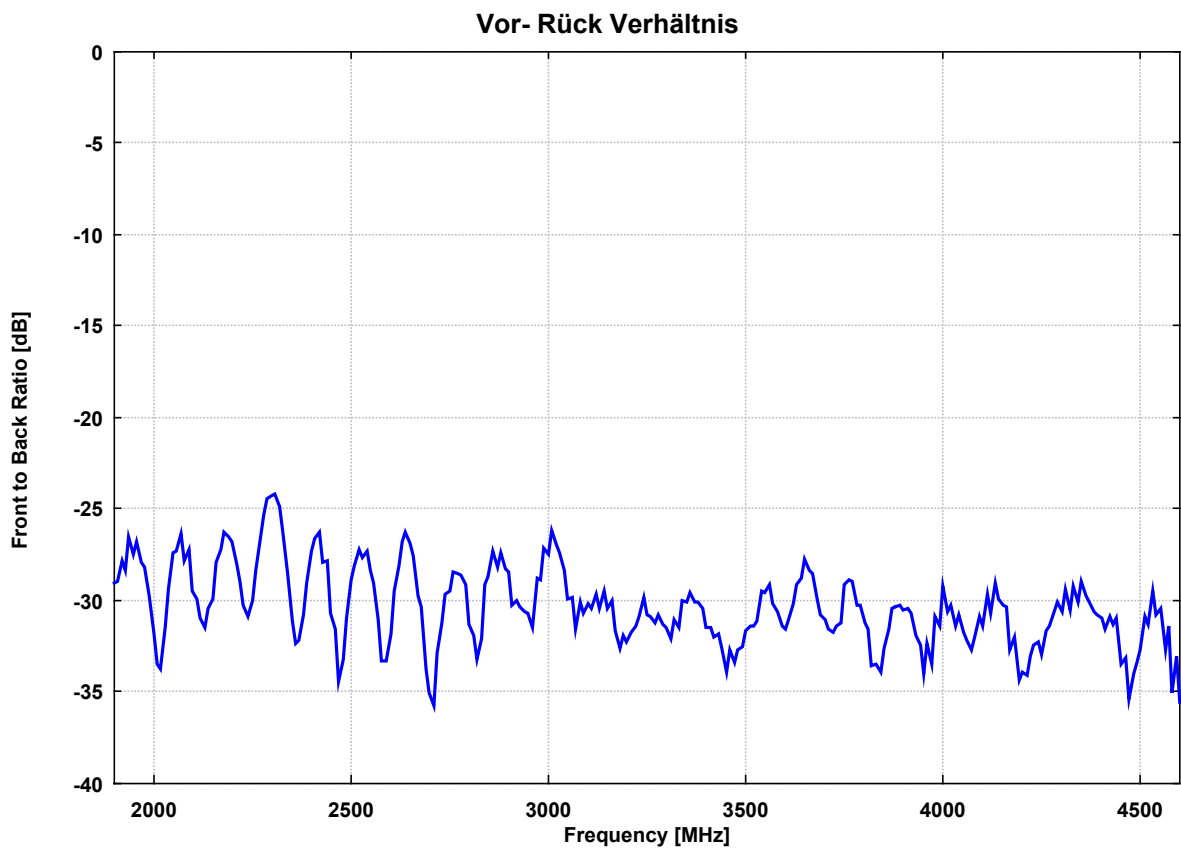
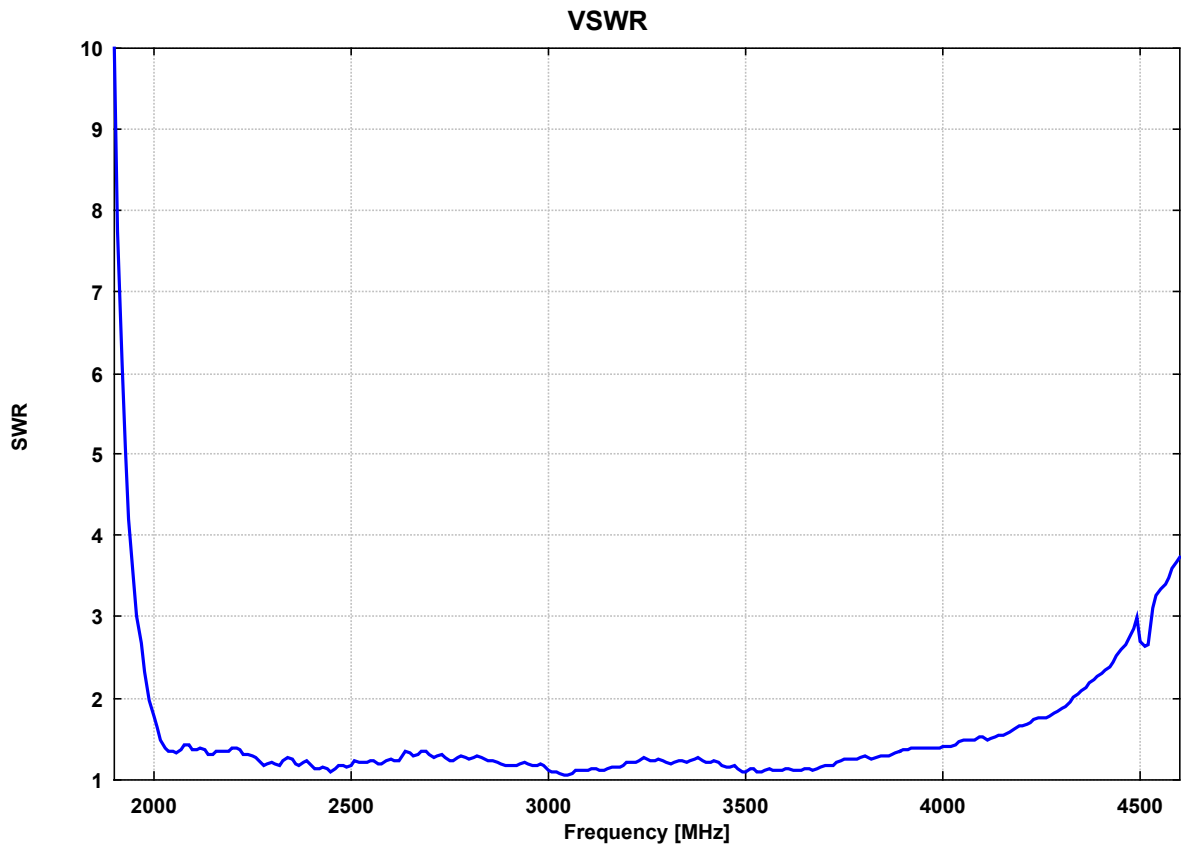
Standard Hornantenne HA 9250-24 ***Standard Horn Antenna HA 9250-24***

Frequency	Gain(Isotr.) Farfield	Ant.-Factor Farfield	Gain(Isotr.) 3 m Aperture	Ant.-Factor 3 m Aperture	Gain(Isotr.) 1 m Aperture	Ant.-Factor 1 m Aperture
MHz	dBi	dB/m	dBi	dB/m	dBi	dB/m
4590.00	18.07	25.38	15.77	27.69	12.21	31.25
4600.00	17.96	25.52	15.69	27.78	11.91	31.57

SCHWARZBECK MESS - ELEKTRONIK

An der Klinge 29 D-69250 Schönau Tel.: 06228/1001 Fax.: (49)6228/1003

Standard Hornantenne HA 9250-24
Standard Horn Antenna HA 9250-24

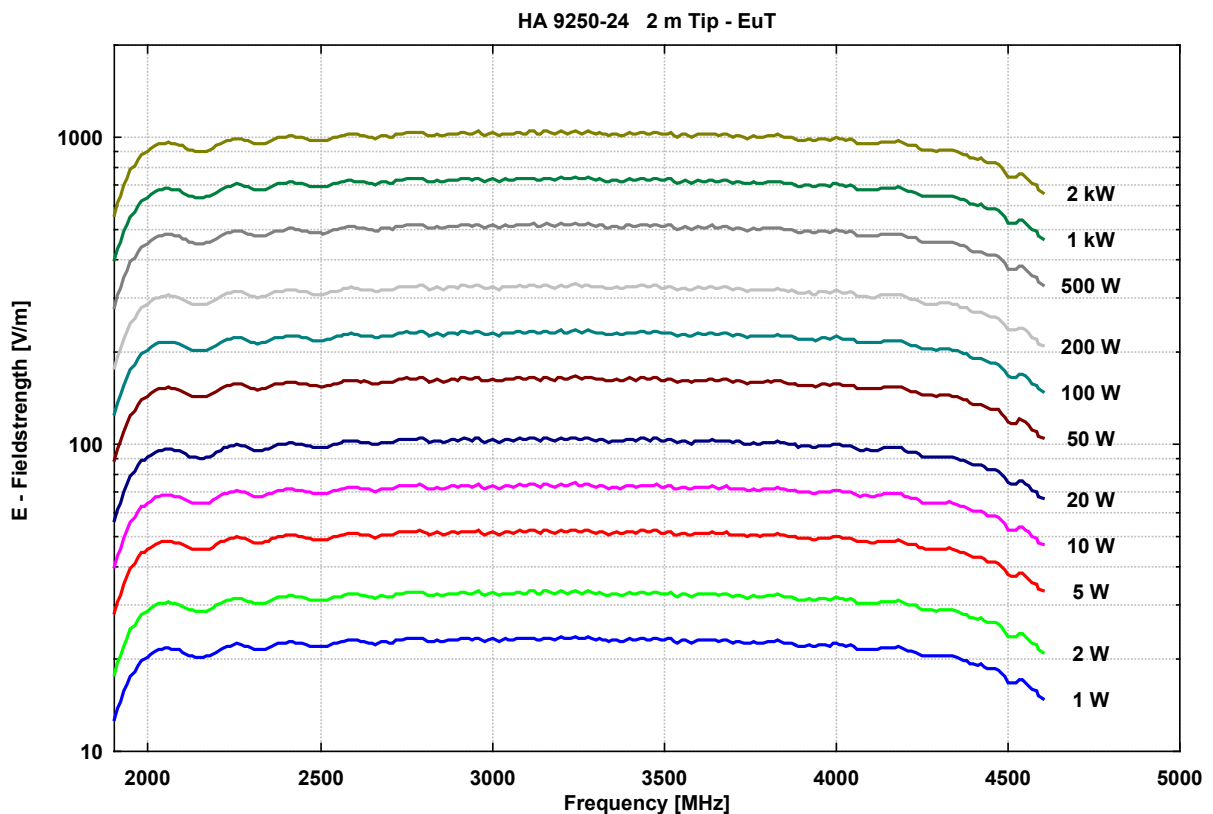
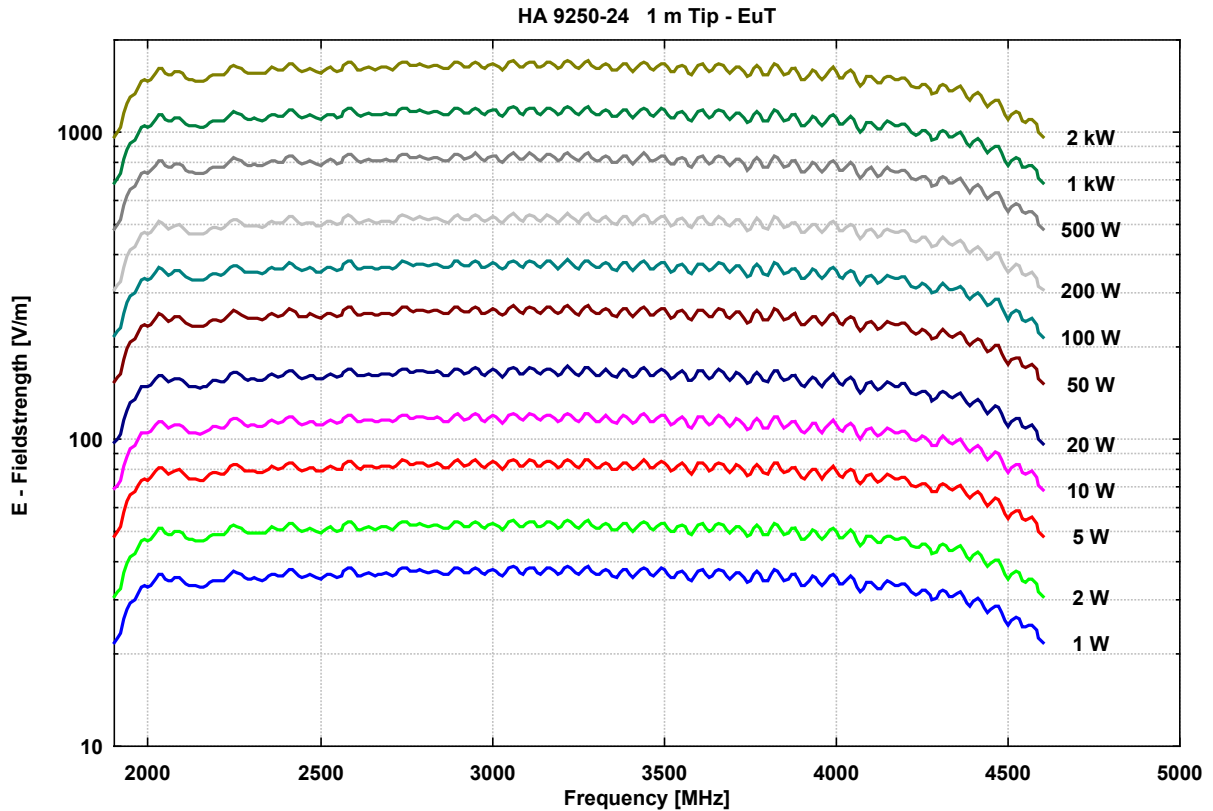


SCHWARZBECK MESS - ELEKTRONIK

An der Klinge 29 D-69250 Schönau Tel.: 06228/1001 Fax.: (49)6228/1003

Standard Hornantenne HA 9250-24 Standard Horn Antenna HA 9250-24

Erzeugte Elektrische Feldstärke vor der Antennenspitze
unmoduliert, Eingangsleistung an 7/16-Buchse, Reflexionsfreie Umgebung
*Generated Electrical Fieldstrength in front of Antenna Tip
no modulation, Input Power at 7/16-Connector, Anechoic Environmental Conditions*



SCHWARZBECK MESS - ELEKTRONIK

An der Klinge 29 D-69250 Schönau Tel.: 06228/1001 Fax.: (49)6228/1003

Standard Hornantenne HA 9250-24 Standard Horn Antenna HA 9250-24

Erzeugte Elektrische Feldstärke vor der Antennenspitze
unmoduliert, Eingangsleistung an 7/16-Buchse, Reflexionsfreie Umgebung
*Generated Electrical Fieldstrength in front of Antenna Tip
no modulation, Input Power at 7/16-Connector, Anechoic Environmental Conditions*

