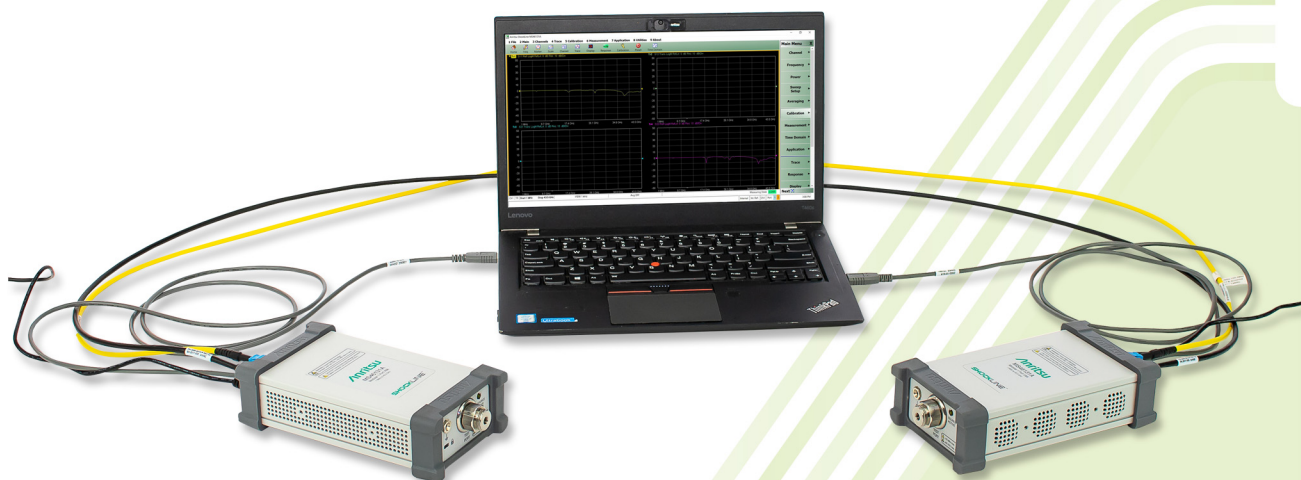


ShockLine™ Modular 2-Port PhaseLync™ VNA

ME7868A

1 MHz to 43.5 GHz

2 Meters to 25+ Meters



Introduction

The ME7868A is part of the ShockLine™ family of Vector Network Analyzers from Anritsu. It is a modular 2-port VNA consisting of two ShockLine MS46131A 1-port VNAs synchronized with PhaseLync™ technology. The ShockLine ME7868A 2-port VNA is available in three frequency ranges: 1 MHz to 8/20/43.5 GHz, and is capable of S-parameter and time domain measurements.

The two ShockLine MS46131A VNAs determine the instrument performance of the ME7868A as they become the test ports and provide the source and measurement capabilities for the 2-port VNA. The MS46131A is based on patented ShockLine VNA on-chip technology, which simplifies the internal VNA architecture at high frequencies, reduces instrument cost and size, and enhances accuracy and measurement repeatability. This makes the 1-port VNA an ideal platform on which to create the distributed 2-port ME7868A VNA.

The patent-pending PhaseLync technology enables the two MS46131As to phase synchronize enabling the ME7868A to measure complex 2-port S-parameters on passive RF and Microwave devices. The MS46131A-012 PhaseLync option supports synchronization to distances of 100 meters or greater, enabling the ME7868A to simplify applications where vector transmission measurements over distance is required by bringing the VNA port to the DUT.

The ME7868A VNA uses USB communication to control both MS46131A VNAs from an external PC. ShockLine software runs the ME7868A as well as the rest of the ShockLine family of VNAs providing a powerful graphical user interface for debugging and manual testing of devices. The software also provides a common command syntax that is compatible across the entire ShockLine VNA lineup for comprehensive remote control programming.

This document provides detailed specifications for the ME7868A series Vector Network Analyzers and related options.

Models and Operating Frequencies

2 Meter

ME7868A-010-2: 1 MHz to 8 GHz

ME7868A-020-2: 1 MHz to 20 GHz

ME7868A-043-2: 1 MHz to 43.5 GHz

5 Meter

ME7868A-010-5: 1 MHz to 8 GHz

ME7868A-020-5: 1 MHz to 20 GHz

ME7868A-043-5: 1 MHz to 43.5 GHz

25 Meter

ME7868A-010-25: 1 MHz to 8 GHz

ME7868A-020-25: 1 MHz to 20 GHz

ME7868A-043-25: 1 MHz to 43.5 GHz

For distances > 25 meters, please contact the factory.

Optional Capabilities

Time Domain Measurements, MS46131A-002	Displays all S-parameters and overlays with Frequency Domain, Low-pass Mode with added harmonics frequency list flexibility, Band-pass Mode, Phasor Impulse Mode, Windowing, Gating (pass-band or reject-band), and Frequency with Time Gate. Option must be enabled on both MS46131As in the ME7868A configuration for time domain to be enabled for the 2-port VNA.
--	---

Table of Contents

Introduction 2

Definitions..... 4

System Dynamic Range 5

High Level Noise — 1-Port MS46131A-010 5

High Level Noise — 1-Port MS46131A-020/043 5

High Level Noise — 2-Port 5

Receiver Compression Levels 5

Output Power Settings 5

Measurement Stability — 1-Port 5

Measurement Stability — 2-Port 5

Frequency Resolution, Accuracy, and Stability 6

Uncorrected (Raw) Port Characteristics 6

MS46131A-010 VNA System Performance with Manual Cal Kits 7

MS46131A-020 VNA System Performance with Manual Cal Kits 8

MS46131A-043 VNA System Performance with Manual Cal Kits 9

MS46131A-043 VNA System Performance with Manual Cal Kits 10

MS46131A-010 VNA System Performance with SmartCal™ 11

MS46131A-010 VNA System Performance with SmartCal™ 12

MS46131A-010, MS46131A-020 VNA System Performance with SmartCal™ 13

MS46131A-010, MS46131A-020 VNA System Performance with SmartCal. 14

MS46131A-043 VNA System Performance with Precision AutoCal™ 15

Measurement Throughput..... 15

Standard Capabilities 16

Standard Capabilities 17

Calibration and Correction Capabilities 18

Remote Operability 18

Standard Device Connections 19

Recommended External PC Configuration 23

Regulatory Compliance..... 23

Environmental 23

Warranty 23

Ordering Information 24

Definitions

	All specifications and characteristics apply under the following conditions, unless otherwise stated. ME7868A 2-port VNAs consist of:
	<ul style="list-style-type: none"> • Two MS46131A, Base model, revision 2 • MS46131A-012, PhaseLync synchronization option, revision 1, installed on both MS46131A 1-port VNAs.
Warm-Up Time	After 60 minutes of warm-up time, where the instrument is left in the ON state.
Temperature Range	Over the 25 °C ± 5 °C temperature range.
Error-Corrected Specifications	Specifications are valid over 23 °C ± 3 °C, with < 1 °C variation from calibration temperature. Error-corrected specifications are warranted and include guard-bands, unless otherwise stated.
Frequency Bands in Tables	When a frequency is listed in two rows of the same table, the specification for the common frequency is taken from the lower frequency band.
User Cables	Specifications do not include effects of any user cables attached to the instrument.
Discrete Spurious Responses	Specifications may exclude discrete spurious responses.
Internal Reference Signal	All specifications apply with the internal 10 MHz frequency reference.
Interpolation Mode	All specifications are with Interpolation Mode Off.
Typical Performance	Typical performance indicates the measured performance of an average unit. It does not include guard-bands and is not covered by the product warranty. Typical specifications are shown in parenthesis, such as (-102 dB), or noted as Typical.
Characteristic Performance	Characteristic performance indicates a performance designed-in and verified during the design phase. It is not covered by the product warranty.
Transmission Performance	All transmission specifications (requiring option 012) are tested with a 2 meter PhaseLync cable. These specifications may be interpreted as typical values for longer PhaseLync cable lengths.
Recommended Calibration Cycle	12 months (Residual specifications also require calibration kit calibration cycle adherence.)
Instrument Grounding	For optimum performance and ESD protection, the AC power cord to the external power supply should be plugged into a AC socket with a ground. If this is not possible, the ground receptacle on the MS46131A can be used to ground the chassis.
Specifications Subject to Change	All specifications subject to change without notice. For the most current data sheet, please visit the Anritsu web site: www.anritsu.com
Patents	The instrument may be protected by one or more of the following patents: 6894581, 7088111, 7545151, 7683633, 7924024, 8417189, 8718586, 9967085, 9964585, 9860054, 9733289, 9366707, 10778592, 9366707, 9733289, 9860054, 9964585, 9967085, 10003453, and 10116432, depending upon the model and option configuration of the instrument

System Dynamic Range

System dynamic range for an ME7868A, consisting of two MS46131A VNAs with a PhaseLync option, is calculated as the difference between High source power and the noise floor (RMS) at the specified reference plane at 10 Hz IF Bandwidth. High isolation mode is used.

Frequency Range	All Configurations (dB)
1 MHz to 5 GHz	97 (110 typical)
> 5 GHz to 8.5 GHz	97 ^{a,b} (105 typical)
> 8.5 GHz to 20 GHz	98 (110 typical)
> 20 GHz to 40 GHz	102 (110 typical)
> 40 GHz to 43.5 GHz	99 (110 typical)

a. The satellite unit's SDR will degrade as follows: > 5 GHz to 7 GHz: 89 (105 typical).

b. Dynamic range maybe degraded in a narrow range near 8 GHz in -020 and -043 models due to receiver residuals.

High Level Noise — 1-Port MS46131A-010

Measured at 100 Hz IF bandwidth and at High power level, RMS.

Frequency	Magnitude (dB)	Phase (deg)
1 MHz to 8 GHz	0.009 (0.003 typical)	0.12 (0.03 typical)

High Level Noise — 1-Port MS46131A-020/043

Measured at 100 Hz IF bandwidth and at High power level, RMS.

Frequency	Magnitude (dB)	Phase (deg)
1 MHz to 6 GHz	0.009 (0.003 typical)	0.12 (0.03 typical)
> 6 GHz to 8 GHz	0.022 (0.01 typical)	0.15 (0.08 typical)
> 8 GHz to 40 GHz	0.006 (0.001 typical)	0.1 (0.02 typical)
> 40 GHz to 43.5 GHz	0.009 (0.002 typical)	0.12 (0.03 typical)

High Level Noise — 2-Port

Measured at 100 Hz IF bandwidth and at High power level, RMS exclusive of drift. Requires PhaseLync option on both MS46131A VNAs. High Isolation Mode off.

Frequency	Magnitude (dB)	Phase (deg)
1 MHz to 4GHz	0.007 (0.0015 typical)	0.21 (0.02 typical)
> 4 GHz to 8 GHz	0.011 (0.003 typical)	0.41 (0.08 typical)
> 8 GHz to 20 GHz	0.006 (0.0015 typical)	0.41 (0.08 typical)
> 20 GHz to 43.5 GHz	0.011 (0.0025 typical)	0.56 (0.25 typical)

Receiver Compression Levels

Port power level beyond which the response may be compressed more than 0.1 dB. Performance is typical.

Frequency Range	All Configurations (dBm)
1 MHz to 43.5 GHz	+ 5

Output Power Settings

Performance is typical.

Power Setting	All Configurations
High (default)	0 dBm ±2dB
Low	- 20 dBm ±2dB
Off	-50 dBm

Measurement Stability — 1-Port

Performance is typical.

Frequency	Magnitude (dB/°C)	Phase (deg/°C)
1 MHz to 43.5 GHz	0.02	0.3

Measurement Stability — 2-Port

Ratioed transmission measurement at default power with an electrically short thru in place over the normal specified temperature range and a 15 m PhaseLync interconnect (values approximately scale with length of the interconnect). Measured with both modules and interconnect in the same environment. Larger values may be obtained with a temperature differential between modules. Performance is typical.

Frequency	Magnitude (dB/°C)	Phase (deg/°C)
1 MHz to 8 GHz	0.015	0.3
> 8 GHz to 20 GHz	0.015	0.5
> 20 GHz to 43.5 GHz	0.02	0.8

Frequency Resolution, Accuracy, and Stability

Resolution	Accuracy	Stability	Aging
1 Hz	± 1.0 ppm (at time of calibration)	± 1.0 ppm from -10 °C to +55 °C, typical	± 1.0 ppm/year, typical

Uncorrected (Raw) Port Characteristics

User and System Correction Off. All specifications are typical.

Frequency Range	Directivity (dB)	Port Match (dB)
1 MHz to 6 GHz	> 6	> 6
> 6 GHz to 8 GHz	> 5	> 6
> 8 GHz to 43.5 GHz	> 10	> 10

MS46131A-010 VNA System Performance with Manual Cal Kits

Error-Corrected Specifications

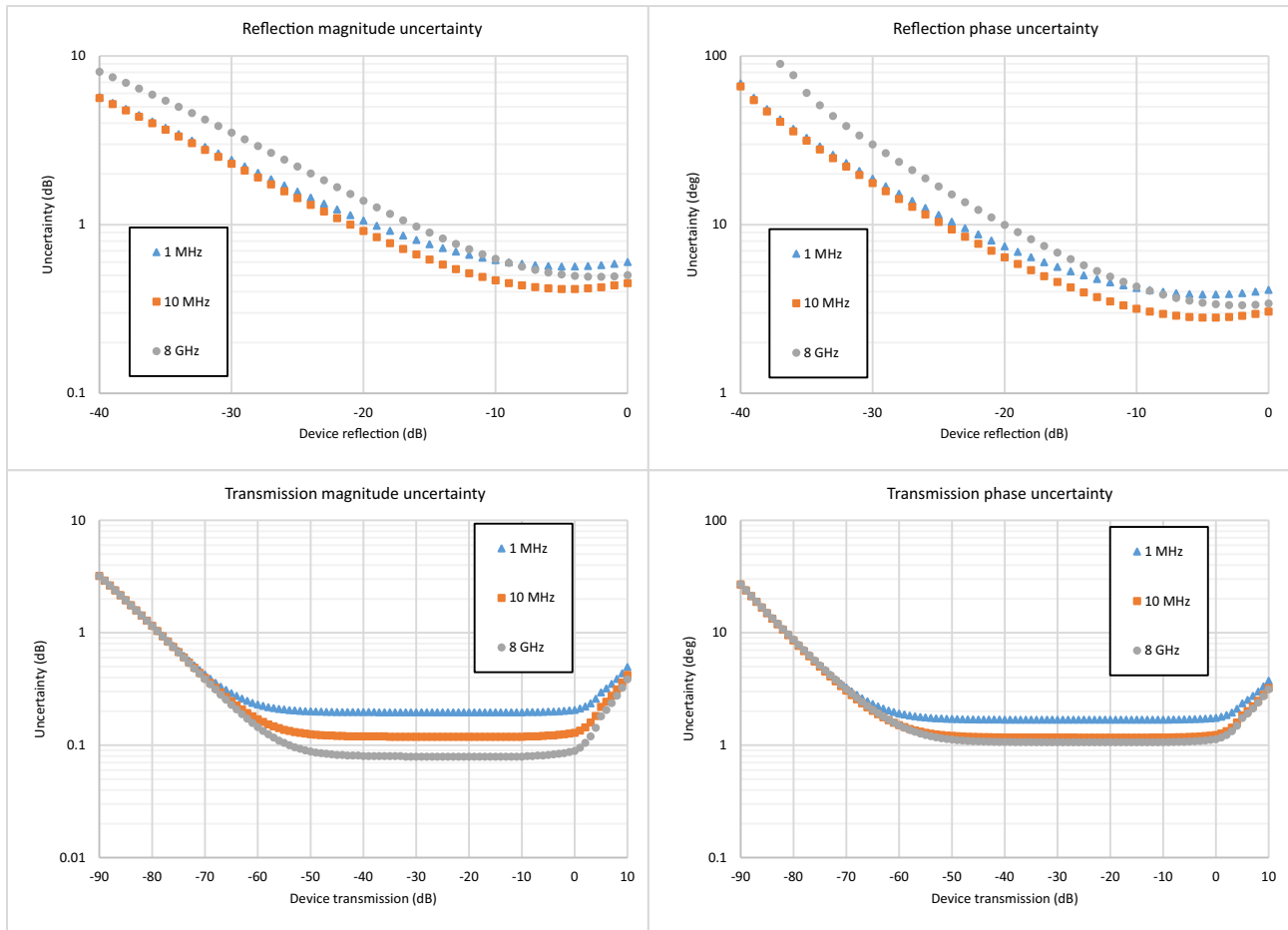
With calibration using TOSLN50A-8 or TOSLNF50A-8 N type connector calibration kits.

Frequency Range	Directivity (dB)	Source Match (dB)	Load Match ^a (dB)	Reflection Tracking ^a (dB)	Transmission Tracking ^a (dB)
1 MHz to 6 GHz	≥ 42	≥ 33	≥ 41	± 0.15	±0.06
> 6 GHz to 8 GHz	≥ 37	≥ 33	≥ 36	± 0.15	±0.06

a. Characteristic performance.

Measurement Uncertainties

The graphs give measurement uncertainties after the above error-corrected calibration. The errors are a worst-case contribution of residual directivity, load and source match, frequency response and isolation, network analyzer dynamic accuracy, and connector repeatability. 10 Hz IF Bandwidth is used. For transmission uncertainties, it is assumed that $S_{11} = S_{22} = 0$. A nominal amount of time drift is included in the computation as is consistent with the use of phase compensation mode. Without phase compensation, uncertainties hold, but for a shorter amount of time/temperature change after calibration. For reflection uncertainties, it is assumed that $S_{21} = S_{12} = 0$. All calibrations and measurements were performed at default port power. For other conditions, please use our free Exact Uncertainty Calculator software, available for download from the Anritsu web site at www.anritsu.com.



MS46131A-020 VNA System Performance with Manual Cal Kits

Error-Corrected Specifications

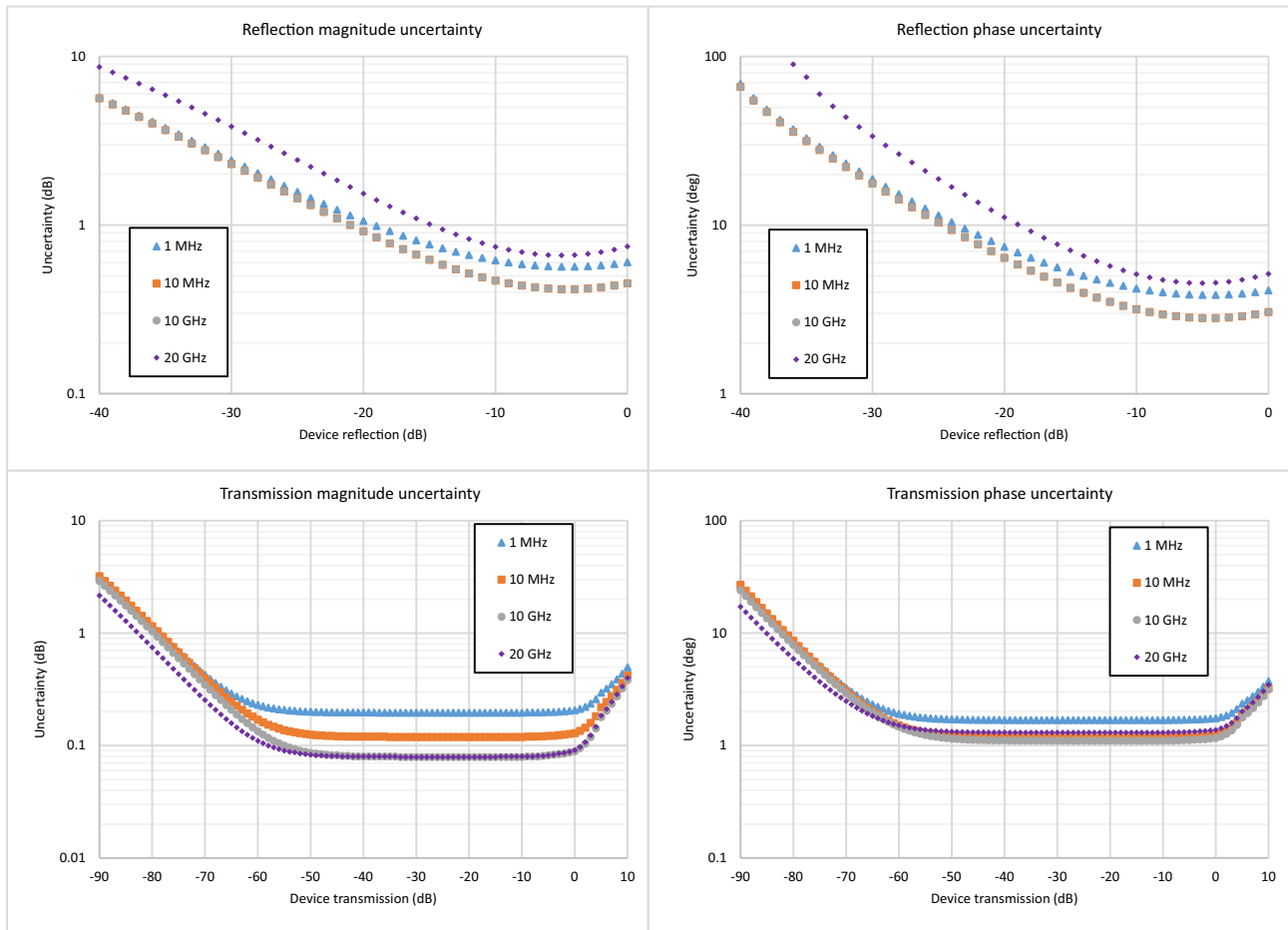
With calibration using the TOSLK50A-20 or TOSLKF50A-20 K type connector calibration kits.

Frequency Range	Directivity (dB)	Source Match (dB)	Load Match ^a (dB)	Reflection Tracking ^a (dB)	Transmission Tracking ^a (dB)
1 MHz to 10 GHz	≥ 42	≥ 33	≥ 41	± 0.15	±0.06
> 10 GHz to 20 GHz	≥ 36	≥ 26	≥ 35	± 0.15	±0.06

a. Characteristic performance.

Measurement Uncertainties

The graphs give measurement uncertainties after the above error-corrected calibration. The errors are a worst-case contribution of residual directivity, load and source match, frequency response and isolation, network analyzer dynamic accuracy, and connector repeatability. 10 Hz IF Bandwidth is used. For transmission uncertainties, it is assumed that $S_{11} = S_{22} = 0$. A nominal amount of time drift is included in the computation as is consistent with the use of phase compensation mode. Without phase compensation, uncertainties hold, but for a shorter amount of time/temperature change after calibration. For reflection uncertainties, it is assumed that $S_{21} = S_{12} = 0$. All calibrations and measurements were performed at default port power. For other conditions, please use our free Exact Uncertainty Calculator software, available for download from the Anritsu web site at www.anritsu.com.



MS46131A-043 VNA System Performance with Manual Cal Kits

Error-Corrected Specifications

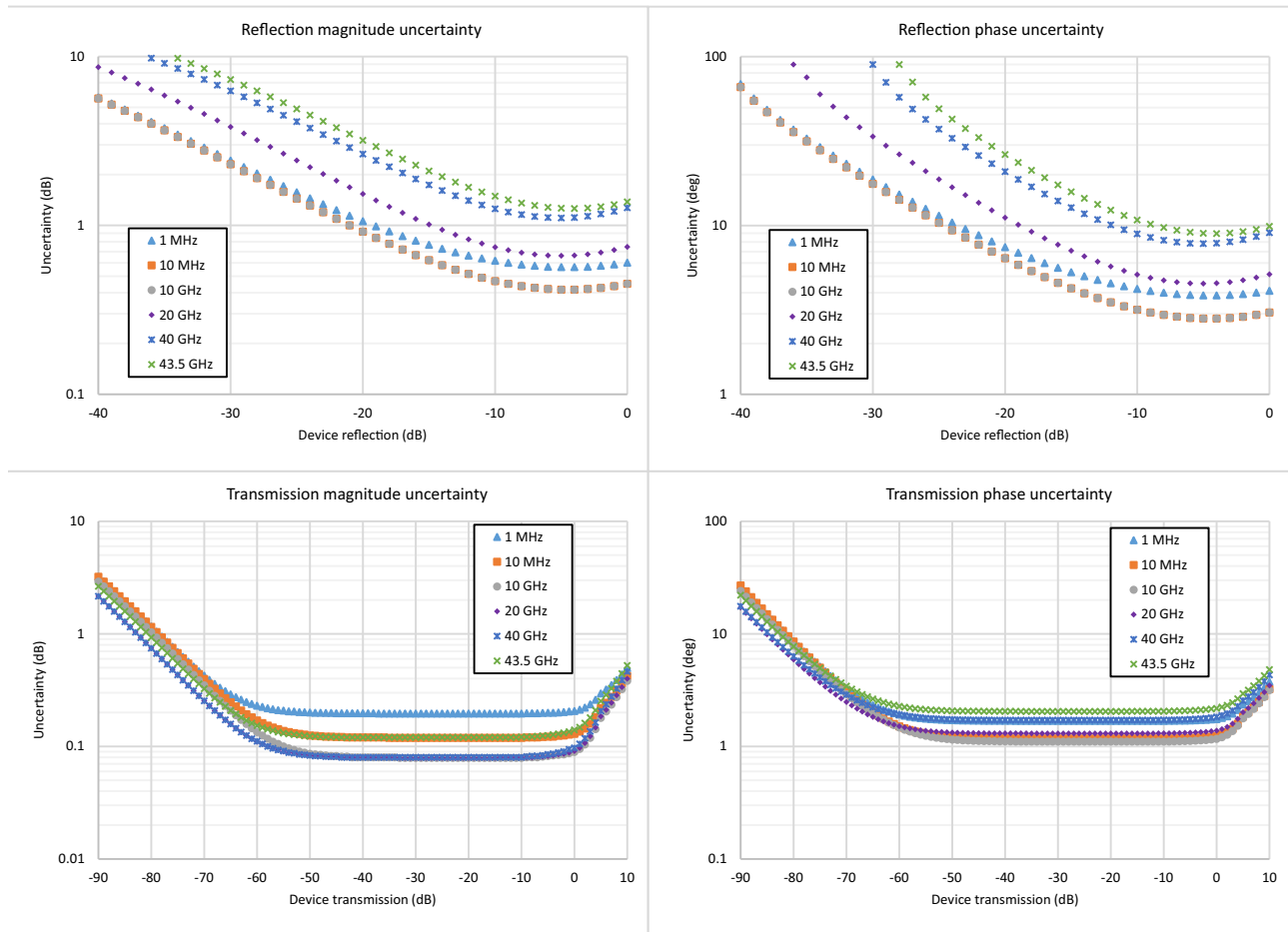
With calibration using TOSLK50A-43.5 or TOSLKF50A-43.5 K type connector calibration kits with generic calibration coefficients.

Frequency Range	Directivity (dB)	Source Match (dB)	Load Match ^a (dB)	Reflection Tracking ^a (dB)	Transmission Tracking ^a (dB)
1 MHz to 10 GHz	≥ 42	≥ 33	≥ 41	± 0.15	±0.06
> 10 GHz to 20 GHz	≥ 36	≥ 26	≥ 35	± 0.15	±0.06
> 20 GHz to 30 GHz	≥ 32	≥ 22	≥ 31	± 0.15	±0.06
> 30 GHz to 40 GHz	≥ 30	≥ 20	≥ 29	± 0.15	±0.06
> 40 GHz to 43.5 GHz	≥ 28	≥ 20	≥ 27	± 0.2	±0.16

a. Characteristic performance.

Measurement Uncertainties

The graphs give measurement uncertainties after the above error-corrected calibration. The errors are a worst-case contribution of residual directivity, load and source match, frequency response and isolation, network analyzer dynamic accuracy, and connector repeatability. 10 Hz IF Bandwidth is used. For transmission uncertainties, it is assumed that $S_{11} = S_{22} = 0$. A nominal amount of time drift is included in the computation as is consistent with the use of phase compensation mode. Without phase compensation, uncertainties hold, but for a shorter amount of time/temperature change after calibration. For reflection uncertainties, it is assumed that $S_{21} = S_{12} = 0$. All calibrations and measurements were performed at default port power. For other conditions, please use our free Exact Uncertainty Calculator software, available for download from the Anritsu web site at www.anritsu.com.



MS46131A-043 VNA System Performance with Manual Cal Kits

Error-Corrected Specifications

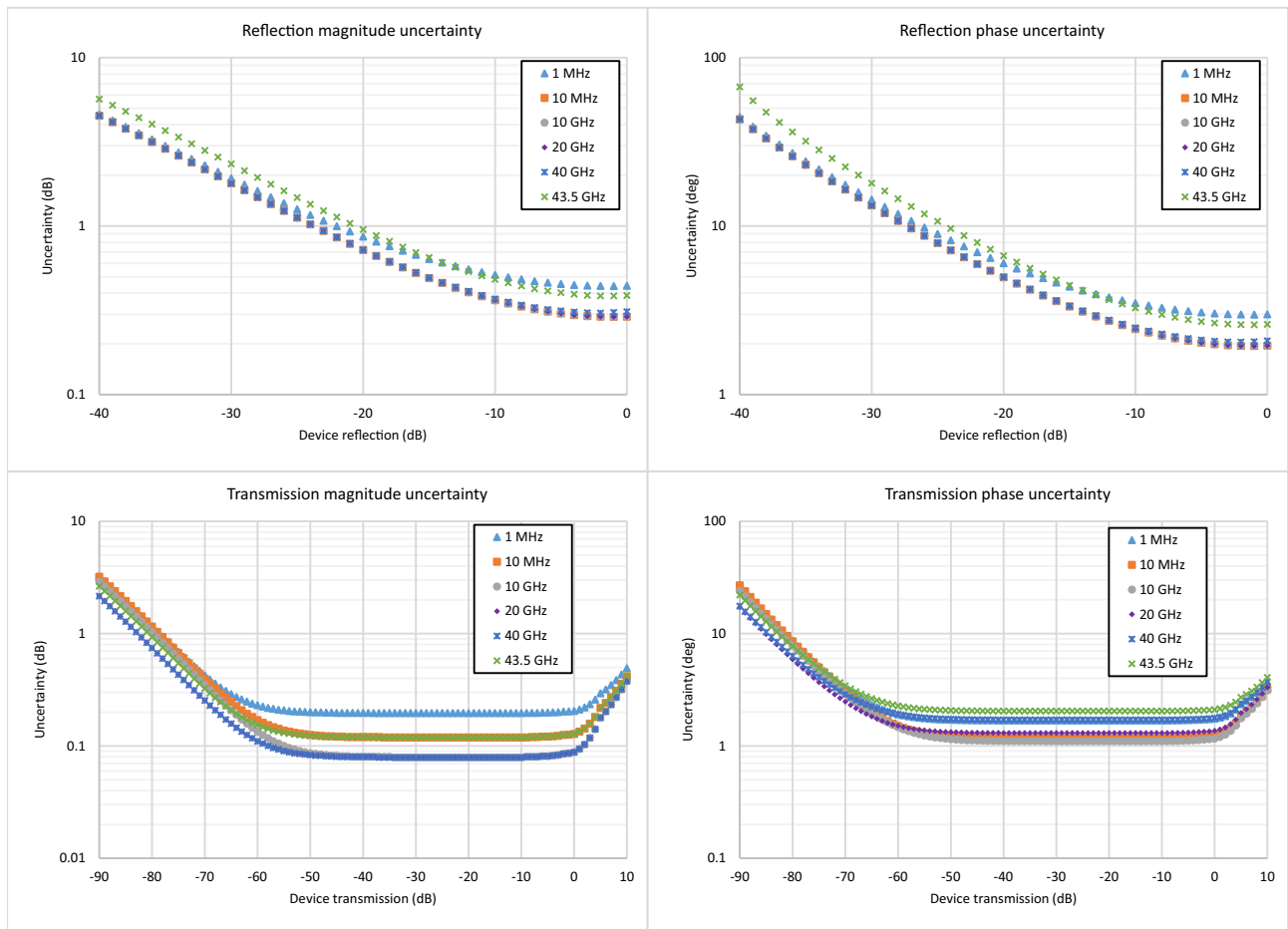
With calibration using TOSLK50A-43.5 or TOSLK50A-43.5 K type connector calibration kits with .s1p definitions.

Frequency Range	Directivity (dB)	Source Match (dB)	Load Match ^a (dB)	Reflection Tracking ^a (dB)	Transmission Tracking ^a (dB)
1 MHz to 50 MHz	≥ 45	≥ 45	≥ 44	± 0.15	±0.06
> 0.05 GHz to 10 GHz	≥ 45	≥ 45	≥ 44	± 0.15	±0.06
> 10 GHz to 20 GHz	≥ 45	≥ 45	≥ 44	± 0.15	±0.06
> 20 GHz to 30 GHz	≥ 45	≥ 44	≥ 44	± 0.15	±0.06
> 30 GHz to 40 GHz	≥ 45	≥ 42	≥ 44	± 0.15	±0.06
> 40 GHz to 43.5 GHz	≥ 42	≥ 41	≥ 41	± 0.2	±0.16

a. Characteristic performance.

Measurement Uncertainties

The graphs give measurement uncertainties after the above error-corrected calibration. The errors are a worst-case contribution of residual directivity, load and source match, frequency response and isolation, network analyzer dynamic accuracy, and connector repeatability. 10 Hz IF Bandwidth is used. For transmission uncertainties, it is assumed that $S_{11} = S_{22} = 0$. A nominal amount of time drift is included in the computation as is consistent with the use of phase compensation mode. Without phase compensation, uncertainties hold, but for a shorter amount of time/temperature change after calibration. For reflection uncertainties, it is assumed that $S_{21} = S_{12} = 0$. All calibrations and measurements were performed at default port power. For other conditions, please use our free Exact Uncertainty Calculator software, available for download from the Anritsu web site at www.anritsu.com.



MS46131A-010 VNA System Performance with SmartCal™

Error-Corrected Specifications

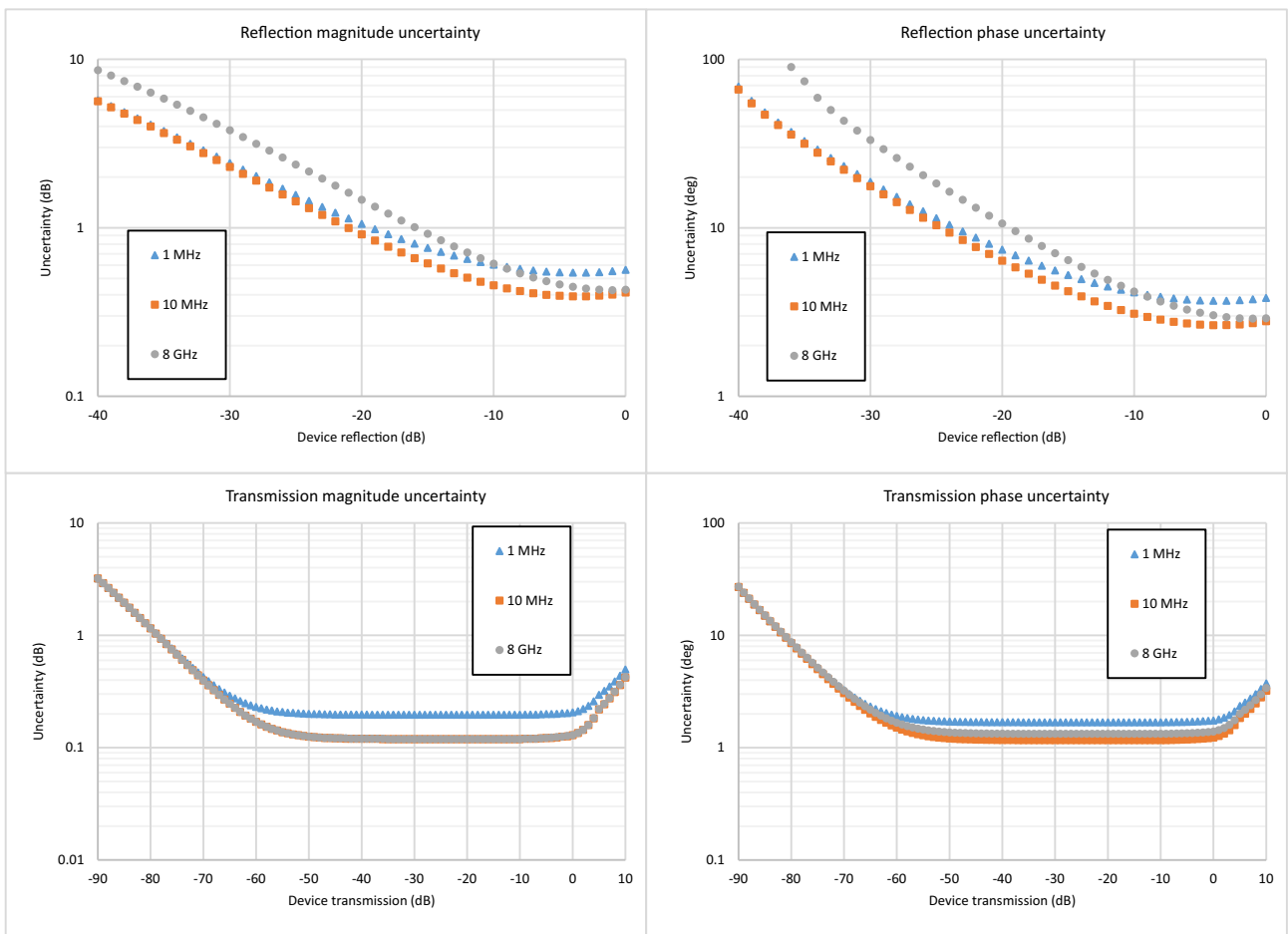
With calibration using the 2-port MN25208A SmartCal™ automatic calibration kit with connector options MN25208A-001, -002, -003

Frequency Range	Directivity (dB)	Source Match (dB)	Load Match ^a (dB)	Reflection Tracking ^a (dB)	Transmission Tracking ^a (dB)
1 MHz to 1 GHz	≥ 42	≥ 35	≥ 41	± 0.15	±0.06
> 1 GHz to 5 GHz	≥ 42	≥ 35	≥ 41	± 0.08	±0.08
> 5GHz to 8 GHz	≥ 36	≥ 35	≥ 36	± 0.1	±0.08

a. Characteristic performance.

Measurement Uncertainties

The graphs give measurement uncertainties after the above error-corrected calibration. The errors are a worst-case contribution of residual directivity, load and source match, frequency response and isolation, network analyzer dynamic accuracy, and connector repeatability. 10 Hz IF Bandwidth is used. For transmission uncertainties, it is assumed that $S_{11} = S_{22} = 0$. A nominal amount of time drift is included in the computation as is consistent with the use of phase compensation mode. Without phase compensation, uncertainties hold, but for a shorter amount of time/temperature change after calibration. For reflection uncertainties, it is assumed that $S_{21} = S_{12} = 0$. All calibrations and measurements were performed at default port power. For other conditions, please use our free Exact Uncertainty Calculator software, available for download from the Anritsu web site at www.anritsu.com.



MS46131A-010 VNA System Performance with SmartCal™

Error-Corrected Specifications

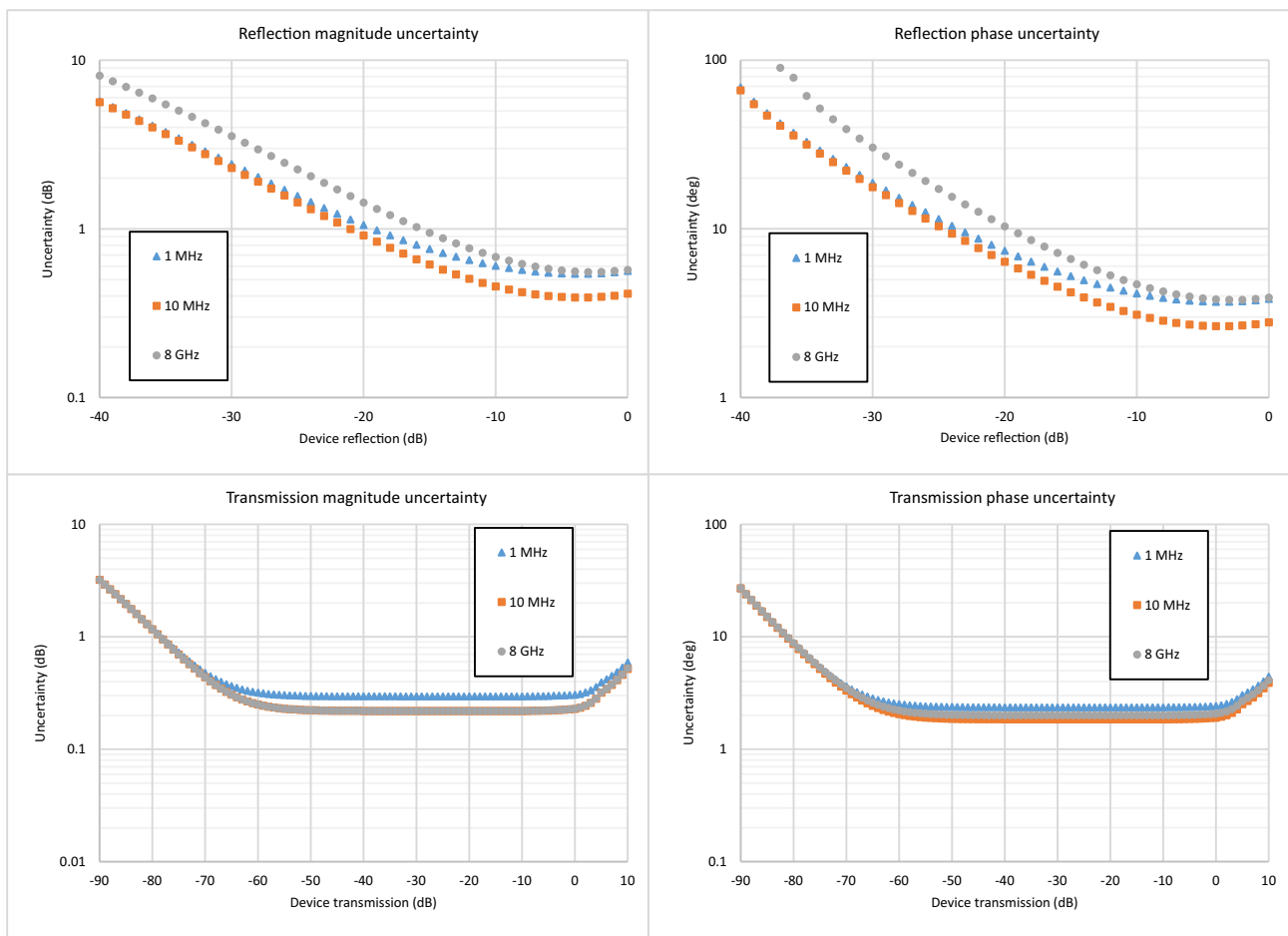
With calibration using the 4-port MN25408A SmartCal™ automatic calibration kit with connector options MN25408A-001, -002, -003

Frequency Range	Directivity (dB)	Source Match (dB)	Load Match ^a (dB)	Reflection Tracking ^a (dB)	Transmission Tracking ^a (dB)
1 MHz to 1 GHz	≥ 42	≥ 35	≥ 41	± 0.15	±0.2
> 1 GHz to 5 GHz	≥ 37	≥ 35	≥ 36	± 0.08	±0.2
> 5 GHz to 8 GHz	≥ 37	≥ 32	≥ 36	± 0.2	±0.2

a. Characteristic performance.

Measurement Uncertainties

The graphs give measurement uncertainties after the above error-corrected calibration. The errors are a worst-case contribution of residual directivity, load and source match, frequency response and isolation, network analyzer dynamic accuracy, and connector repeatability. 10 Hz IF Bandwidth is used. For transmission uncertainties, it is assumed that $S_{11} = S_{22} = 0$. A nominal amount of time drift is included in the computation as is consistent with the use of phase compensation mode. Without phase compensation, uncertainties hold, but for a shorter amount of time/temperature change after calibration. For reflection uncertainties, it is assumed that $S_{21} = S_{12} = 0$. All calibrations and measurements were performed at default port power. For other conditions, please use our free Exact Uncertainty Calculator software, available for download from the Anritsu web site at www.anritsu.com.



MS46131A-010, MS46131A-020 VNA System Performance with SmartCal™

Error-Corrected Specifications

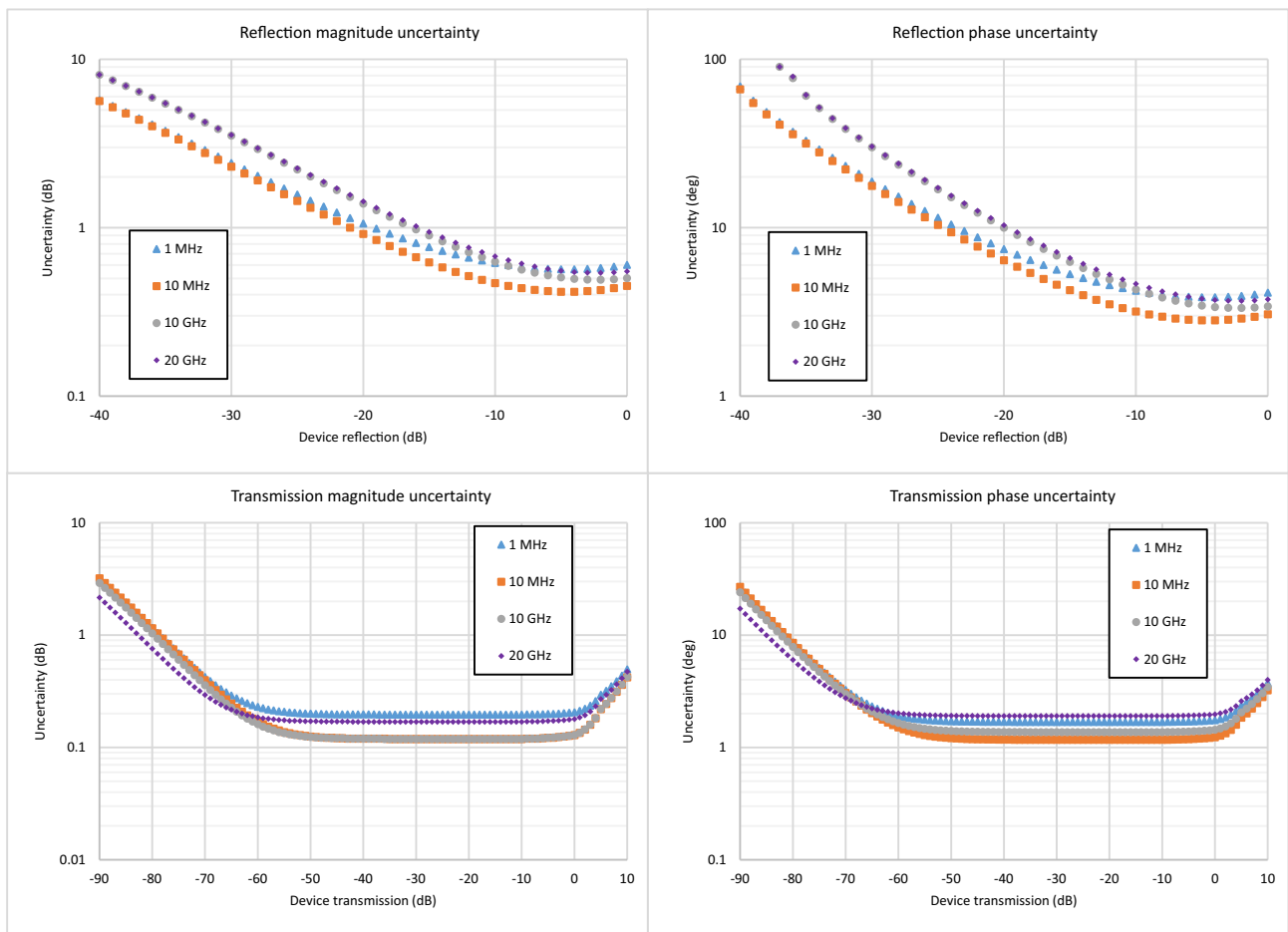
With calibration using the 2-port MN25218A SmartCal™ automatic calibration kit.

Frequency Range	Directivity (dB)	Source Match (dB)	Load Match ^a (dB)	Reflection Tracking ^a (dB)	Transmission Tracking ^a (dB)
1 MHz to 1 GHz	≥ 42	≥ 33	≥ 41	± 0.15	±0.1
> 1 GHz to 10 GHz	≥ 37	≥ 33	≥ 41	± 0.15	±0.1
> 10 GHz to 18 GHz	≥ 37	≥ 33	≥ 35	± 0.15	±0.1
> 18 GHz to 20 GHz	≥ 37	≥ 33	≥ 35	± 0.20	±0.15

a. Characteristic performance.

Measurement Uncertainties

The graphs give measurement uncertainties after the above error-corrected calibration. The errors are a worst-case contribution of residual directivity, load and source match, frequency response and isolation, network analyzer dynamic accuracy, and connector repeatability. 10 Hz IF Bandwidth is used. For transmission uncertainties, it is assumed that $S_{11} = S_{22} = 0$. A nominal amount of time drift is included in the computation as is consistent with the use of phase compensation mode. Without phase compensation, uncertainties hold, but for a shorter amount of time/temperature change after calibration. For reflection uncertainties, it is assumed that $S_{21} = S_{12} = 0$. All calibrations and measurements were performed at default port power. For other conditions, please use our free Exact Uncertainty Calculator software, available for download from the Anritsu web site at www.anritsu.com.



MS46131A-010, MS46131A-020 VNA System Performance with SmartCal

Error-Corrected Specifications

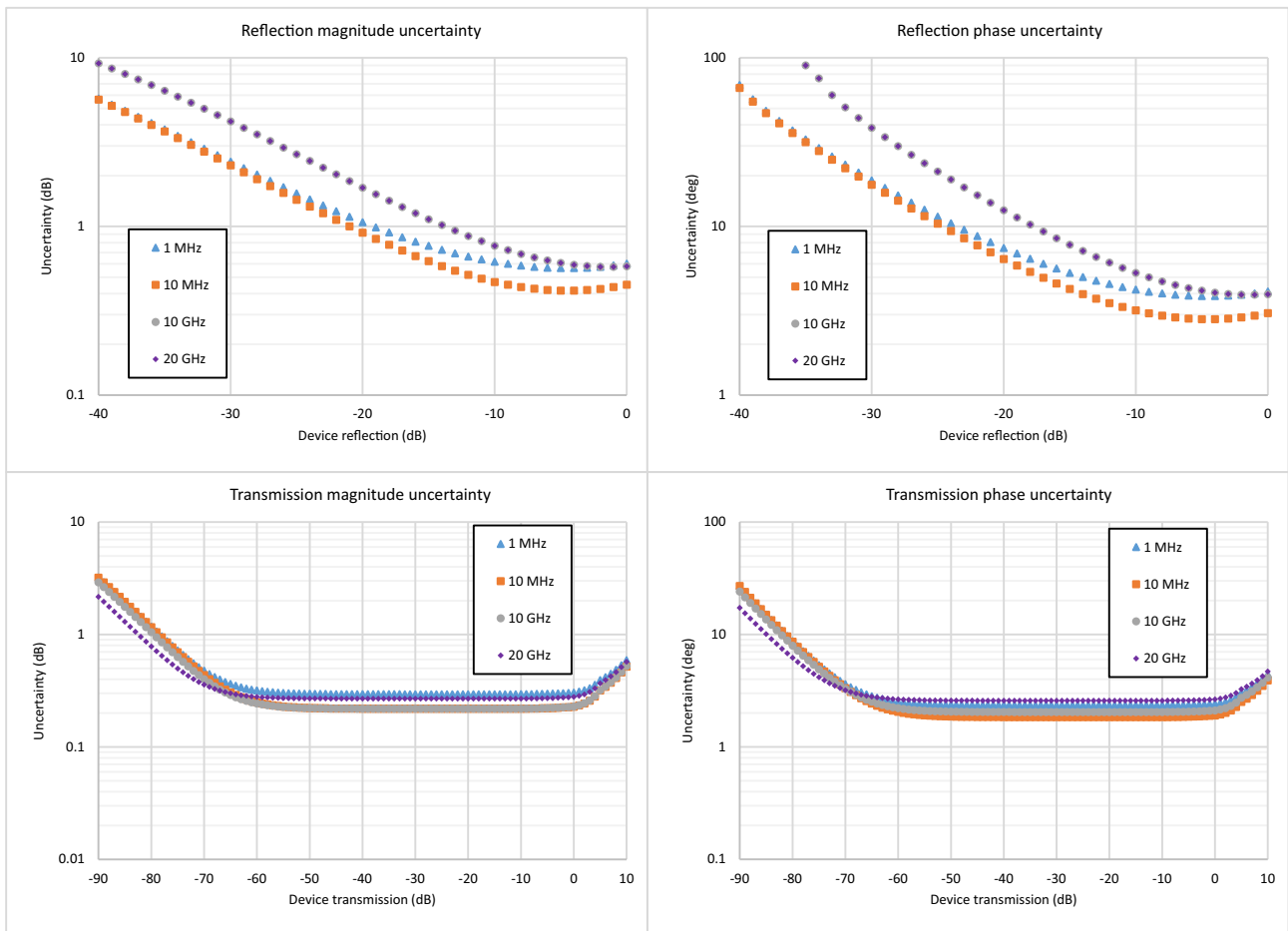
With calibration using the 4-port MN25418A SmartCal™ automatic calibration kit.

Frequency Range	Directivity (dB)	Source Match (dB)	Load Match ^a (dB)	Reflection Tracking ^a (dB)	Transmission Tracking ^a (dB)
1 MHz to 10 MHz	≥ 40	≥ 31	≥ 41	± 0.15	±0.20
> 10 MHz to 6 GHz	≥ 40	≥ 31	≥ 41	± 0.15	±0.15
> 6 GHz to 18 GHz	≥ 35	≥ 31	≥ 36	± 0.20	±0.20
> 18 GHz to 20 GHz	≥ 35	≥ 31	≥ 33	± 0.20	±0.25

a. Characteristic performance.

Measurement Uncertainties

The graphs give measurement uncertainties after the above error-corrected calibration. The errors are a worst-case contribution of residual directivity, load and source match, frequency response and isolation, network analyzer dynamic accuracy, and connector repeatability. 10 Hz IF Bandwidth is used. For transmission uncertainties, it is assumed that $S_{11} = S_{22} = 0$. A nominal amount of time drift is included in the computation as is consistent with the use of phase compensation mode. Without phase compensation, uncertainties hold, but for a shorter amount of time/temperature change after calibration. For reflection uncertainties, it is assumed that $S_{21} = S_{12} = 0$. All calibrations and measurements were performed at default port power. For other conditions, please use our free Exact Uncertainty Calculator software, available for download from the Anritsu web site at www.anritsu.com.



MS46131A-043 VNA System Performance with Precision AutoCal™

Error-Corrected Specifications

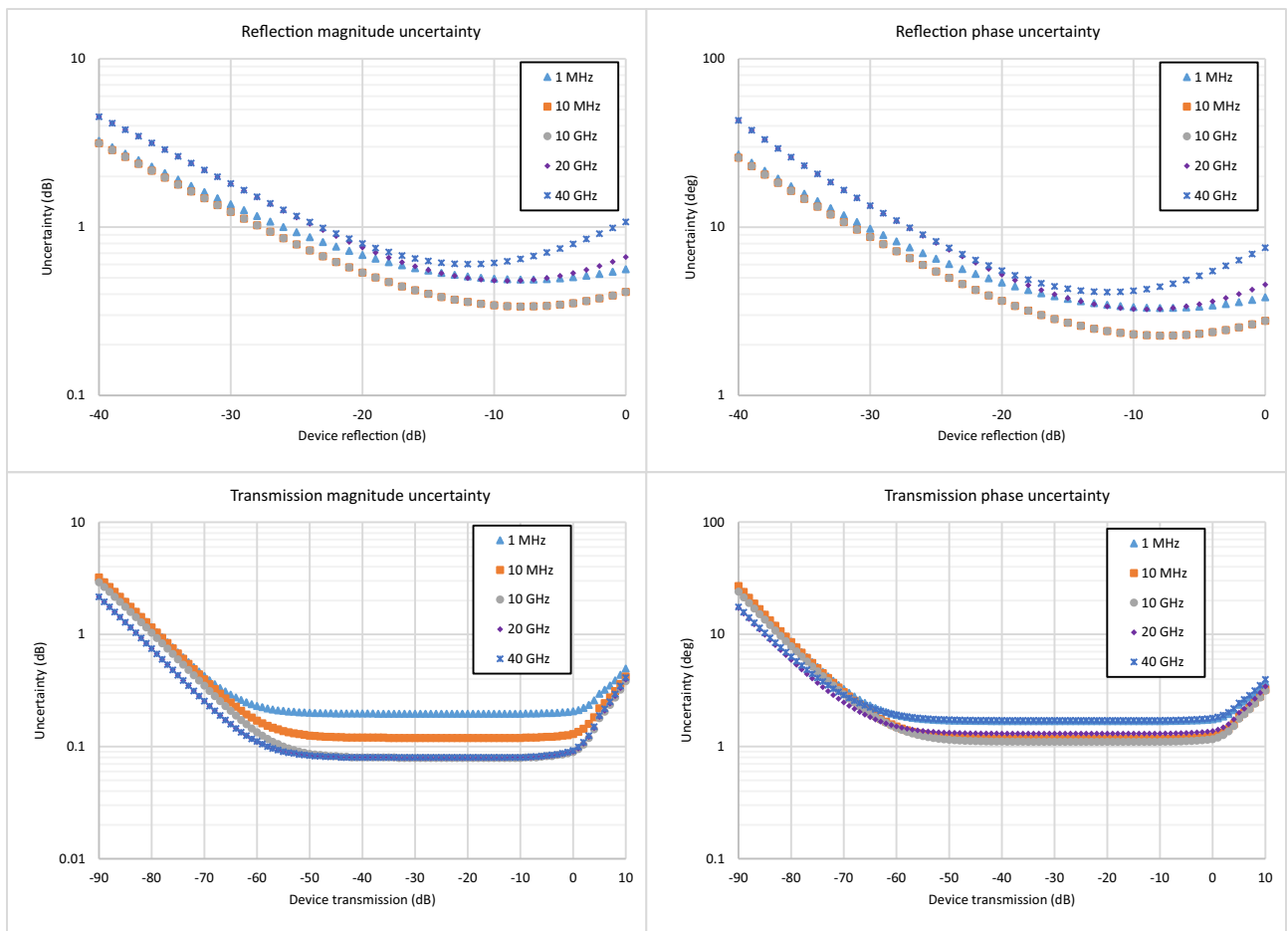
With calibration using the 36585K automatic calibration kit with type K connectors.

Frequency Range	Directivity (dB)	Source Match (dB)	Load Match ^a (dB)	Reflection Tracking ^a (dB)	Transmission Tracking ^a (dB)
1 MHz to < 10 GHz	≥ 50	≥ 49	≥ 42	± 0.15	±0.06
10 GHz to < 20 GHz	≥ 45	≥ 49	≥ 36	± 0.15	±0.06
20 GHz to < 30 GHz	≥ 45	≥ 45	≥ 36	± 0.10	±0.06
30 GHz to 40 GHz	≥ 45	≥ 45	≥ 30	± 0.10	±0.06

a. Characteristic performance.

Measurement Uncertainties

The graphs give measurement uncertainties after the above error-corrected calibration. The errors are a worst-case contribution of residual directivity, load and source match, frequency response and isolation, network analyzer dynamic accuracy, and connector repeatability. 10 Hz IF Bandwidth is used. For transmission uncertainties, it is assumed that $S_{11} = S_{22} = 0$. A nominal amount of time drift is included in the computation as is consistent with the use of phase compensation mode. Without phase compensation, uncertainties hold, but for a shorter amount of time/temperature change after calibration. For reflection uncertainties, it is assumed that $S_{21} = S_{12} = 0$. All calibrations and measurements were performed at default port power. For other conditions, please use our free Exact Uncertainty Calculator software, available for download from the Anritsu web site at www.anritsu.com.



Measurement Throughput

Measurement Speed

180 μs/point (1-port calibrated data, typical)

250 μs/point (2-port calibrated data, phase compensation ON, IF Gain ranging OFF, typical)

Per point single sweep time, including placing measurement data into memory. Average of narrow, mid, and wide frequency span sweeps. Measured with 300 kHz IFBW, 1601 points. Timing dependent on external computer configuration. Measurements taken with an Intel® Core™ i5-6300U processor running Windows 10 with 4 GB of RAM and 60 GB of free hard disk space.

Standard Capabilities

Operating Frequencies		Applies to all PhaseLync cable lengths.
	ME7868A-010	1 MHz to 8 GHz
	ME7868A-020	1 MHz to 20 GHz
	ME7868A-043	1 MHz to 43.5 GHz
Measurement Parameters		
	2-Port Measurements	S11, S21, S22, S12, and any user-defined combination of a1, a2, b1, b2, 1 Maximum Efficiency Analysis, Mixed-mode SDD, SDC, SCD, SCC
	Domains	Frequency Domain, Time (Distance) Domain (Option 002)
Sweeps		
	Frequency Sweep Types	Linear, Log, CW, or Segmented
Display Graphs		
	Single Rectilinear Graph Types	Log Magnitude, Phase, Group Delay, Linear Magnitude, Real, Imaginary, SWR, Impedance
	Dual Rectilinear Graph Types	Log Mag and Phase, Linear Mag and Phase, Real and Imaginary
	Circular Graph Types	Smith Chart (Impedance), Polar
Measurements Data Points		
	Maximum Data Points	2 to 16,001 points
Limit Lines		
	Limit Lines	Single or segmented. 2 limit lines per trace. 50 segments per trace.
	Single Limit Readouts	Uses interpolation to determine the intersection frequency.
	Test Limits	Both single and segmented limits can be used for PASS/FAIL testing.
Ripple Limit Lines		
	Limit Lines	Single or segmented. 2 limit lines per trace. 50 segments per trace.
	Ripple Value	Absolute Value or Margin
	Test Limits	Both single and segmented limits can be used for PASS/FAIL testing.
Averaging		
	Point-by-Point	Point-by-point (default), maximum number of averages = 200
	Sweep-by-Sweep	Sweep-by-sweep, maximum number of averages = 4096
IF Bandwidth		
		10, 20, 50, 70, 100, 200, 300, 500, 700 Hz 1, 2, 3, 5, 7, 10, 20, 30, 50, 70, 100, 200, 300 kHz
Reference Plane		
	Line Length or Time Delay	The reference planes of a calibration or other normalization can be changed by entering a line length or time delay.
	Dielectric Constants	Dielectric constants may be entered for different media so the length entry can be physically meaningful.
	Dispersion Modeling	Dispersion modeling is used in the cases of microstrip and waveguide to take into account frequency dependent phase velocities.
	Attenuation	Attenuation (with frequency slope) and constant phase offsets can be entered to better describe any reference plane distortions. The frequency dependence exponent is changeable.
	Auto Modes	Automatic reference plane finding tools are available for phase alone or phase + magnitude. These routines do a fitting process on phase or phase and magnitude to estimate the reference plane location and enter correcting values.
	De-embedding	For more complete reference plane manipulation, the full de-embedding system can also be used.
Measurement Frequency Range		
	Frequency Range Change	Frequency range of the measurement can be narrowed within the calibration range without recalibration.
	CW Mode	CW mode permits single frequency measurements also without recalibration.
	Interpolation Not Activated	If interpolation is not activated, the subset frequency range is forced to use calibration frequency points.
	Interpolation Activated	If interpolation is activated, any frequency range that is a subset of the calibration frequency range can be used, but there may be some added interpolation error.
Group Delay		
	Group Delay Aperture	Defined as the frequency span over which the phase change is computed at a given frequency point.
	Aperture	The aperture can be changed without recalibration.
	Minimum Aperture	The minimum aperture is the frequency range divided by the number of points in calibration and can be increased to 20 % of the frequency range.
	Group Delay Range	< 180° of phase change within the aperture

Standard Capabilities (continued)

Channels, Display, and Traces

Channels and Traces	16 channels, each with up to 16 traces
Display Colors	Unlimited colors for data traces, memory, text, markers, graticules, and limit lines
Trace Memory and Math	Up to 20 trace memories per channel can be used to store trace measurement data for later display or subtraction, addition, multiplication or division with current measurement data. The trace data can be saved and recalled.
Inter-trace Math	Any two traces within a channel can be combined (via addition, subtraction, multiplication, or division) and displayed on another trace. An equation editor mode is also available that allows the combination of trace data, trace memory and S-parameter data in more complex equations. Over 30 built-in functions are available. Simple editing tools and the ability to save/recall equations are also provided.

Scale Resolution

	Minimum per division, varies with graph type.
Log Magnitude	0.001 dB
Linear Magnitude	10 μU
Phase	0.01°
Group Delay	0.1 ps
Time	0.0001 ps
Distance	0.1 μm
SWR	10 μU
Power	0.01 dB

Markers

Markers	12 markers + 1 reference marker
Marker Coupling	Coupled or decoupled
Marker Overlay	Display markers on active trace only or on all traces when multiple trace responses are present on the same trace
Marker Data	Data displayed in graph area or in table form
Reference Marker	Additional marker per trace for reference
Marker Statistics	Mean, maximum, minimum, standard deviation Per trace or over a marker region
Marker Search and Tracking	Search and/or track for minimum, maximum, peak, or target value. Multiple marker search ranges per trace are available.

Other

Filter Parameters	Display bandwidth (user-selectable loss value), corner and center frequencies, loss, Q, and shape factors.
S-Parameter Conversion	Z Reflection Impedance Z Transmission Impedance Y Reflection Admittance Y Transmission Admittance 1/S

Calibration and Correction Capabilities

Calibration Methods	<p>Short-Open-Load-Through (SOLT) Offset-Short-Offset-Short-Load-Through (SSLT) Triple-Offset-Short-Through (SSST) Short-Open-Load-Reciprocal (SOLR) Line-Reflect-Line (LRL) / Line-Reflect-Match (LRM) Thru-Reflect-Line (TRL) / Thru-Reflect-Match (TRM) SmartCal™ AutoCal™ Thru Update available Secondary match correction available for improved low insertion loss measurements</p>
Correction Models	<p>1-Port (S11, S22, or both) 2-Port (Forward, Reverse, or both directions) Transmission Frequency Response (Forward, Reverse, or both directions) Reflection Frequency Response (S11, S22, or both)</p>
Coefficients for Calibration Standards	<p>Use the Anritsu calibration kit USB memory device to load kit coefficients and characterization files. Enter coefficients into user-defined locations. Use complex load models.</p>
Interpolation	Allows interpolation between calibration frequency points.
Adapter Removal Calibration	Characterizes and “removes” an adapter that is used during calibration that will not be used for subsequent device measurements; for accurate measurement of non-insertable devices.
Dispersion Compensation	Selectable as Coaxial, other non-dispersive (e.g., for coplanar waveguide), Waveguide, or Microstrip
Embedding/De-embedding	The ME7868A is equipped with an Embedding/De-embedding system.
De-embedding	De-embedding is generally used for removal of test fixture contributions, modeled networks, and other networks described by S-parameters (s2p files) from measurements.
Embedding	Similarly, the Embedding function can be used to simulate matching circuits for optimizing amplifier designs or simply adding effects of a known structure to a measurement.
Multiple Networks	Multiple networks can be embedded/de-embedded and changing the port and network orientations is handled easily.
Extraction Utility	An extraction utility is part of this package that allows easier computation of de-embedding files based on additional calibration steps and measurements.
Impedance Conversion	Allows entry of different reference impedances (complex values) for different ports

Remote Operability

ShockLine supports several remote operability options.

Communication Type	Data Format	Performance	Description
Drivers	IVI-C drivers are available for download from the Anritsu website. The IVI-C package supports National Instruments LabVIEW and LabWindows, C#, .NET, MATLAB, and Python programming environments.		
Triggering	Start Trigger	Software and Digital Edge	
	Input Range	+3.3 V logic level (+5 V tolerant)	
	Minimum Trigger Width	50 ns	
	Trigger Delay	6 μs, typical	

Standard Device Connections



2 Meter

- ME7868A-010-2: 1 MHz to 8 GHz
- ME7868A-020-2: 1 MHz to 20 GHz
- ME7868A-043-2: 1 MHz to 43.5 GHz

Solution includes:

- Two MS46131A Modular 1-Port VNAs:
 - Each VNA must have one frequency option 010 / 020 / 043
 - Each VNA must have Option 012 PhaseLync
- One 2000-2011-R (2 meter) PhaseLync Optical Cable (PLO)
- One 2000-2013-R (2 meter) PhaseLync Electrical Cable (PLE)
- Windows PC is user supplied



5 Meter

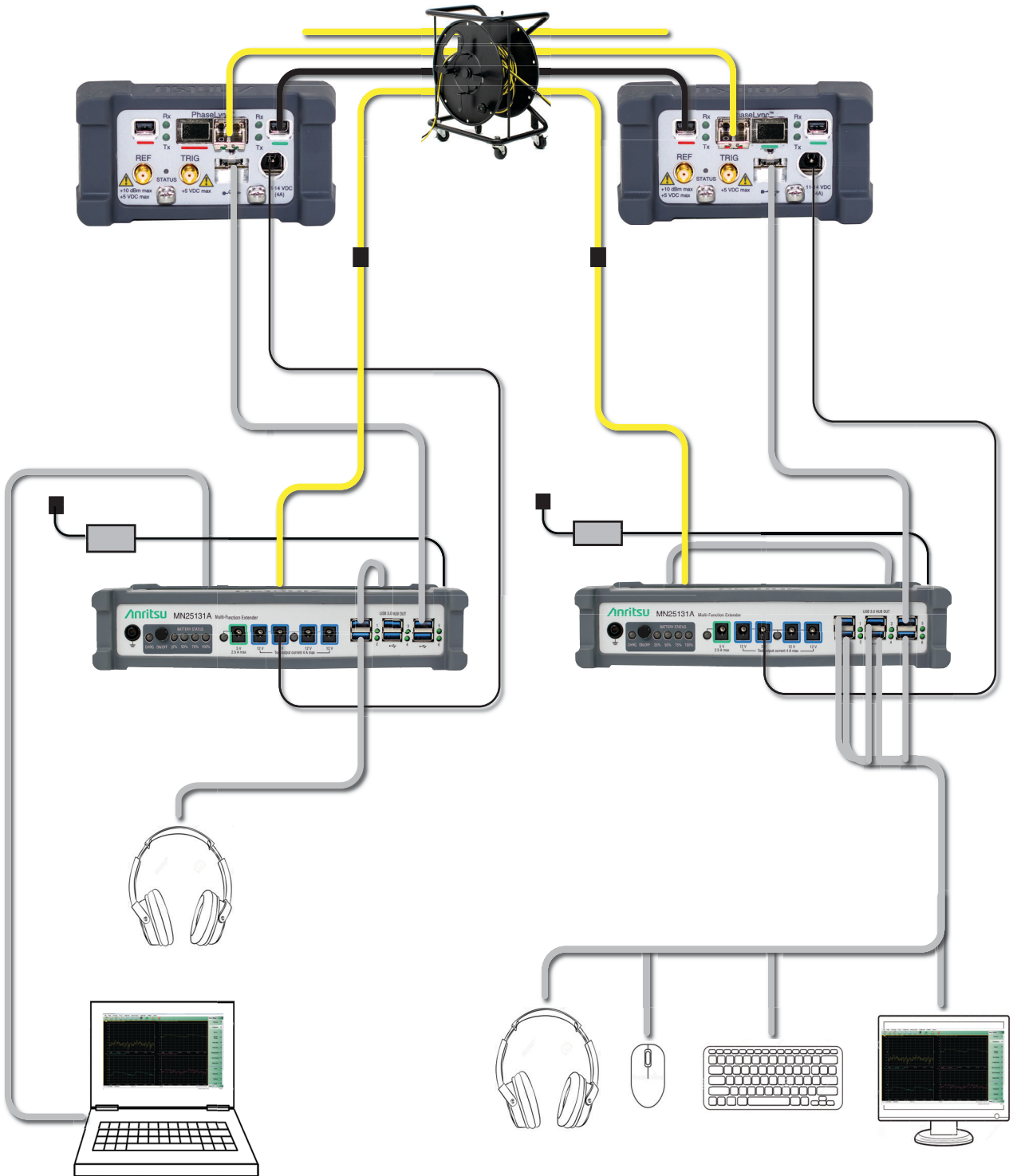
ME7868A-010-5: 1 MHz to 8 GHz

ME7868A-020-5: 1 MHz to 20 GHz

ME7868A-043-5: 1 MHz to 43.5 GHz

Solution includes:

- Two MS46131A Modular 1-Port VNAs:
 - Each VNA must have one frequency option 010 / 020 / 043
 - Each VNA must have Option 012 PhaseLync
- One 2000-2012-R (5 meter) PhaseLync Optical Cable (PLO)
- One 2000-2014-R (5 meter) PhaseLync Electrical Cable (PLE)
- Two 3 meter USB extension cables
- Windows PC is user supplied



25 Meter

ME7868A-010-25: 1 MHz to 8 GHz
ME7868A-020-25: 1 MHz to 20 GHz
ME7868A-043-25: 1 MHz to 43.5 GHz

Solution includes:

- Two MS46131A Modular 1-Port VNAs:
 - Each VNA must have one frequency option 010 / 020 / 043
 - Each VNA must have Option 012 PhaseLync
- One 2000-2025-R (25 meter) PhaseLync Cable Assembly
- One 2000-2007-R PhaseLync Accessory Kit:
 - Two MN25131A Multifunction Extenders
 - USB Monitor
 - USB Keyboard/Mouse
 - Two USB Headsets
 - Extender Connection Cables
- Windows PC is user supplied

For distances > 25 meters, please contact the factory.

Test Port	ME7868A-010	N(f)
	ME7868A-020	Ruggedized K(m)
	ME7868A-043	Ruggedized Extended-K™(m)
	Damage Input Levels	+23 dBm maximum, ±50 VDC maximum
10 MHz In		Signal presence is auto-sensing (better than 10 ppm frequency accuracy is recommended).
	Connector Type	SMA(f)
	Signal	+0 dBm, typical; 50 Ω, nominal
External Trigger Input/Output		External trigger input should be applied to the Base MS46131A in the ME7868A. External trigger output may be accessed on the Satellite MS46131A.
	Connector Type	SMA(f)
	Voltage Input	0 to 3.3 V input (5 V tolerant)
	Impedance	High impedance (> 100 kΩ)
	Pulse Width	50 ns minimum input pulse width
	Trigger Delay	6 μs typical
	Voltage Output	0 to 3.3 V (HCMOS logic)
	Drive Current	12 mA maximum
	Pulse Width	1 μs, typical

Recommended External PC Configuration

CPU	Intel® Core™ i5-6300U Processor
RAM	4 GB
Disk	120 GB
DirectX	Version 9 with Windows Display Driver Model (WDDM) installed ShockLine software is compatible with Windows® 7, 8, 8.1, or 10; 32 or 64 bit operating systems
USB	One USB 2.0 (or higher) type A port per MS46131A used To increase the number of USB ports available, an externally powered USB hub may also be used.

Regulatory Compliance

European Union	EMC 2014/30/EU, EN 61326:2013, CISPR 11/EN 55011, IEC/EN 61000-4-2/3/4/5/6/11 Low Voltage Directive 2014/35/EU Safety EN 61010-1:2010 RoHS Directive 2011/65/EU & Amendment 2015/863
United Kingdom	EMC SI 2016/1091; BS EN 55011 & BS EN 61000-4-2/3/4/5/6/8/11 Consumer Protection (Safety) SI 2016/1101; BS EN 61010-1:2010 Environmental Protection SI 2012/3032; 2011/65/EU & 2015/863
Canada	ICES-1(A)/NMB-1(A)
Australia and New Zealand	RCM AS/NZS 4417:2012
South Korea	R-R-AJ-1011

Environmental

	MIL-PRF-28800F Class 2
Operating Temperature Range	-10 °C to 55 °C
Storage Temperature Range	-51 °C to 71 °C
Maximum Relative Humidity	95 % RH at 30 °C, non-condensing
Altitude	4600 meters, operating and non-operating

Warranty

MS46131A and Built-In Options	3 years from the date of shipment (standard warranty)
MN25131A	Typically 1 year from the date of shipment
PhaseLync cables	Typically 1 year from the date of shipment
Calibration Kits	Typically 1 year from the date of shipment
Test Port Cables	Typically 1 year from the date of shipment
Warranty Options	Additional warranty available

Ordering Information

ME7868A 2-Port VNA	2 meter	ME7868A-010-2: 2-port Modular ME7868A Vector Network Analyzer, 1 MHz to 8 GHz
		ME7868A-020-2: 2-port Modular ME7868A Vector Network Analyzer, 1 MHz to 20 GHz
		ME7868A-043-2: 2-port Modular ME7868A Vector Network Analyzer, 1 MHz to 43.5 GHz
	5 meter	ME7868A-010-5: 2-port Modular ME7868A Vector Network Analyzer, 1 MHz to 8 GHz
		ME7868A-020-5: 2-port Modular ME7868A Vector Network Analyzer, 1 MHz to 20 GHz
		ME7868A-043-5: 2-port Modular ME7868A Vector Network Analyzer, 1 MHz to 43.5 GHz
	25 meter ¹	ME7868A-010-25: 2-port Modular ME7868A Vector Network Analyzer, 1 MHz to 8 GHz
		ME7868A-020-25: 2-port Modular ME7868A Vector Network Analyzer, 1 MHz to 20 GHz
		ME7868A-043-25: 2-port Modular ME7868A Vector Network Analyzer, 1 MHz to 43.5 GHz

VNA Options

Main Options	MS46131A-002, Time Domain with Time Gating (required on both MS46131A VNAs for option to be enabled in the ME7868A)
Calibration Options	VNA performance is determined by the verified performance of the two MS46131As in the configuration. Calibration options offered for the MS46131A only. MS46131A-098, Standard Calibration, ISO 17025 compliant, without data MS46131A-099, Premium Calibration, ISO 17025 compliant, with data

Precision Automatic Calibrator Modules

MN25208A	2-port USB SmartCal Module, 300 kHz to 8.5 GHz (available with connector Options -001 N(f), -002 K(f), -003 3.5 mm(f))
MN25408A	4-port USB SmartCal Module, 300 kHz to 8.5 GHz (available with connector Options -001 N(f), -002 K(f), -003 3.5 mm(f))
MN25218A ²	2-port USB SmartCal Module, 300 kHz to 20 GHz (available with connector Option -002 K(f))
MN25418A	4-port USB SmartCal Module, 300 kHz to 20 GHz (available with connector Option -002 K(f))
36585K-2M	K Connector Precision AutoCal Module, 70 kHz to 40 GHz, K(m) to K(m)
36585K-2F	K Connector Precision AutoCal Module, 70 kHz to 40 GHz, K(f) to K(f)
36585K-2MF	K Connector Precision AutoCal Module, 70 kHz to 40 GHz, K(m) to K(f)
2000-1809-R	Serial to USB Adapter (required for use with 36585 AutoCal module if control PC does not have a serial port)

Mechanical Calibration Kits

3650A	SMA/3.5 mm Calibration Kit, Without Sliding Loads, DC to 26.5 GHz, 50 Ω
3652A	K Connector Calibration Kit, Without Sliding Loads, DC to 40 GHz, 50 Ω
3653A	N Connector Calibration Kit, Without Sliding Loads, DC to 18 GHz, 50 Ω
OSLN50A-8	Precision N Male Open/Short/Load Mechanical Calibration Tee, DC to 8 GHz, 50 Ω
OSLNF50A-8	Precision N Female Open/Short/Load Mechanical Calibration Tee, DC to 8 GHz, 50 Ω
TOSLN50A-8	Precision N Male Through/Open/Short/Load Mechanical Calibration Tee, DC to 8 GHz, 50 Ω
TOSLNF50A-8	Precision N Female Through/Open/Short/Load Mechanical Calibration Tee, DC to 8 GHz, 50 Ω
OSLN50A-18	Precision N Male Open/Short/Load Mechanical Calibration Tee, DC to 18 GHz, 50 Ω
OSLNF50A-18	Precision N Female Open/Short/Load Mechanical Calibration Tee, DC to 18 GHz, 50 Ω
TOSLN50A-18	Precision N Male Through/Open/Short/Load Mechanical Calibration Tee, DC to 18 GHz, 50 Ω
TOSLNF50A-18	Precision N Female Through/Open/Short/Load Mechanical Calibration Tee, DC to 18 GHz, 50 Ω
TOSLK50A-20	Precision K Male Through/Open/Short/Load Mechanical Calibration Tee, DC to 20 GHz, 50 Ω
TOSLKF50A-20	Precision K Female Through/Open/Short/Load Mechanical Calibration Tee, DC to 20 GHz, 50 Ω
TOSLK50A-40	Precision K Male Through/Open/Short/Load Mechanical Calibration Tee, DC to 40 GHz, 50 Ω
TOSLKF50A-40	Precision K Female Through/Open/Short/Load Mechanical Calibration Tee, DC to 40 GHz, 50 Ω
TOSLK50A-43.5	Precision K Male Through/Open/Short/Load Mechanical Calibration Tee, DC to 43.5 GHz, 50 Ω Includes .s1p files for data-based calibration support
TOSLKF50A-43.5	Precision K Female Through/Open/Short/Load Mechanical Calibration Tee, DC to 43.5 GHz, 50 Ω Includes .s1p files for data-based calibration support

Verification Kits

3663-3	N Connector Verification Kit
3668-4	K Connector Verification Kit

1. All 25 meter configurations come with additional components to enable long distance usage. These items include two MN25131A multi-function extenders, USB monitor, keyboard, mouse, headset, and additional cabling to allow for communication and control from either side of the 25 meter setup.
2. Applies to Rev 2 SmartCal Modules. MN25218A with serial numbers < 1817999 operate from 1 MHz to 20 GHz.

Adapters

1091-26-R	Adapter, SMA(m) to N(m), DC to 18 GHz, 50 Ω
1091-27-R	Adapter, SMA(f) to N(m), DC to 18 GHz, 50 Ω
1091-80-R	Adapter, SMA(m) to N(f), DC to 18 GHz, 50 Ω
1091-81-R	Adapter, SMA(f) to N(f), DC to 18 GHz, 50 Ω
71693-R	Ruggedized adapter, K(f) to N(f), DC to 18 GHz, 50 Ω
33KK50C	Calibration Grade Adapter, DC to 43.5 GHz, K(m) to K(m), 50 Ω
33KKF50C	Calibration Grade Adapter, DC to 43.5 GHz, K(m) to K(f), 50 Ω
33KFKF50C	Calibration Grade Adapter, DC to 43.5 GHz, K(f) to K(f), 50 Ω
34NK50	Precision Adapter, N(m) to K(m), DC to 18 GHz, 50 Ω
34NKF50	Precision Adapter, N(m) to K(f), DC to 18 GHz, 50 Ω
34NFK50	Precision Adapter, N(f) to K(m), DC to 18 GHz, 50 Ω
34NFKF50	Precision Adapter, N(f) to K(f), DC to 18 GHz, 50 Ω
34VFK50A	Precision Adapter, DC to 43.5 GHz, V(f) - K(m), 50 Ω
34VFKF50A	Precision Adapter, DC to 43.5 GHz, V(f) - K(f), 50 Ω
34VK50A	Precision Adapter, DC to 43.5 GHz, V(m) - K(m), 50 Ω
34VKF50A	Precision Adapter, DC to 43.5 GHz, V(m) - K(f), 50 Ω
K220B	Precision Adapter, DC to 40 GHz, K(m) to K(m), 50 Ω
K222B	Precision Adapter, DC to 40 GHz, K(f) to K(f), 50 Ω
K224B	Precision Adapter, DC to 40 GHz, K(m) to K(f), 50 Ω

Test Port Cables, Flexible, Ruggedized, Phase Stable



15 Series Cable Example

15NNF50-1.0B	Test Port Cable, Flexible, Phase Stable, N(f) to N(m), 1.0 m
15NNF50-1.5B	Test Port Cable, Flexible, Phase Stable, N(f) to N(m), 1.5 m
15NN50-1.0B	Test Port Cable, Flexible, Phase Stable, N(m) to N(m), 1.0 m
15LL50-1.0A	Test Port Extension Cable, Armored, Phase Stable, DC to 26.5 GHz, 3.5 mm(m) to 3.5 mm(m), 1.0 m, 50 Ω
15LLF50-1.0A	Test Port Extension Cable, Armored, Phase Stable, DC to 26.5 GHz, 3.5 mm(m) to 3.5 mm(f), 1.0 m, 50 Ω
15KK50-1.0A	Test Port Extension Cable, Armored, Phase Stable, DC to 26.5 GHz, K(m) to K(m), 1.0 m, 50 Ω
15KKF50-1.0A	Test Port Extension Cable, Armored, Phase Stable, DC to 26.5 GHz, K(m) to K(f), 1.0 m, 50 Ω

Phase-Stable 18 GHz and 43.5 GHz Semi-Rigid Cables (Armored)



3670 Series Cable Example

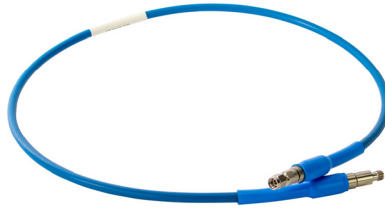
3670N50-1	0.3 m (12"), DC to 18 GHz, N(f) to N(m), 50 Ω
3670NN50-1	0.3 m (12"), DC to 18 GHz, N(m) to N(m), 50 Ω
3670N50-2	0.6 m (24"), DC to 18 GHz, N(f) to N(m), 50 Ω
3670NN50-2	0.6 m (24"), DC to 18 GHz, N(m) to N(m), 50 Ω
3670K50A-1	0.3 m (12"), DC to 43.5 GHz, K(f) to K(m), 50 Ω
3670K50A-2	0.6 m (24"), DC to 43.5 GHz, K(f) to K(m), 50 Ω

Phase-Stable 20 GHz, 40 GHz, and 43.5 GHz Test Port Cables (Flexible)



3671 Series Cable Example

3671KFS50-60	60 cm (23.6 in), DC to 20 GHz, K(f) to 3.5 mm(m), 50 Ω
3671KFSF50-60	60 cm (23.6 in), DC to 20 GHz, K(f) to 3.5 mm(f), 50 Ω
3671KFKF50-60	60 cm (23.6 in), DC to 40 GHz, K(f) to K(f), 50 Ω
3671KFK50-100	100 cm (39.4 in), DC to 40 GHz, K(f) to K(m), 50 Ω
806-304-R	36 in (91.5 cm), DC to 40 GHz, K(m) - K(f), 50 Ω
806-423-R	60 cm (23.6 in), DC to 43.5 GHz, K(f) - K(f), 50 Ω
806-424-R	60 cm (23.6 in), DC to 43.5 GHz, K(m) - K(f), 50 Ω
806-425-R	100 cm (39.4 in), DC to 43.5 GHz, K(f) - K(f), 50 Ω
806-426-R	100 cm (39.4 in), DC to 43.5 GHz, K(m) - K(f), 50 Ω



806-304-R Cable Example



806-423-R Cable Example

Transit Case

760-295-R	Transit Case (for ME7868A VNA system)
-----------	---------------------------------------

Tools

01-201	Torque End Wrench, 5/16 in, 0.9 N·m (8 lbf·in) (for tightening male devices, for SMA, 3.5 mm, 2.4 mm, K, and V connectors)
01-203	Torque End Wrench, 13/16 in, 0.9 N·m (8 lbf·in) (for tightening ruggedized SMA, 2.4 mm, K and V test port connectors)
01-204	End Wrench, 5/16 in, Universal, Circular, Open-ended (for SMA, 3.5 mm, 2.4 mm, K, and V connectors)
More Information	Refer to our Precision RF & Microwave Components Catalog for descriptions of adapters and other components.

Documentation

User Documentation	Soft copies of the manuals as Adobe Acrobat PDF files are available for download from the instrument model web page at www.anritsu.com . For more information and product support, please contact www.anritsu.com/contact-us .
10100-00067	ShockLine Product Information, Compliance, and Safety
10410-00780	MS46131A Series VNA Operation Manual
10410-00781	ShockLine Modular VNA Maintenance Manual
10410-00783	MN25131A Series Multi-Function Extender Operation Manual
10410-00337	MS46121A/B, MS46122A/B, MS46131A, and MS46322A/B Series VNA User Interface Reference Manual
10410-00336	MS46122A/B, MS46131A, and MS46322A/B Series VNA Measurement Guide
10410-00746	ShockLine Programming Manual

Notes

Training at Anritsu

Anritsu has designed courses to help you stay up to date with technologies important to your job. For available training courses, visit: www.anritsu.com and search for training and education.



• United States

Anritsu Americas Sales Company

490 Jarvis Drive, Morgan Hill, CA 95037-2809, U.S.A.
Phone: +1-800-Anritsu (1-800-267-4878)

• Canada

Anritsu Electronics Ltd.

Americas Sales and Support

490 Jarvis Drive, Morgan Hill, CA 95037-2809, U.S.A.
Phone: +1-800-Anritsu (1-800-267-4878)

• Brazil

Anritsu Eletronica Ltda.

Praça Amadeu Amaral, 27 - 1 Andar
01327-010 - Bela Vista - Sao Paulo - SP, Brazil
Phone: +55-11-3283-2511
Fax: +55-11-3288-6940

• Mexico

Anritsu Company, S.A. de C.V.

Blvd Miguel de Cervantes Saavedra #169 Piso 1,
Col. Granada, Mexico, Ciudad de Mexico,
11520, MEXICO
Phone: +52-55-4169-7104

• United Kingdom

Anritsu EMEA Limited

900 Capability Green,
Luton, Bedfordshire, LU1 3LU, U.K.
Phone: +44-1582-433200
Fax: +44-1582-731303

• France

Anritsu SA

12 avenue du Québec, Immeuble Goyave,
91140 VILLEBON SUR YVETTE, France
Phone: +33-1-60-92-15-50

• Germany

Anritsu GmbH

Nemetschek Haus, Konrad-Zuse-Platz 1,
81829 München, Germany
Phone: +49-89-442308-0
Fax: +49-89-442308-55

• Italy

Anritsu S.R.L.

Spaces Eur Arte, Viale dell'Arte 25, 00144 Roma, Italy
Phone: +39-6-509-9711

• Sweden

Anritsu AB

Kistagången 20 B, 2 tr, 164 40 Kista, Sweden
Phone: +46-8-534-707-00

• Finland

Anritsu AB

Technopolis Aviapolis, Teknobulevardi 3-5 (D208.5),
FI-01530 Vantaa, Finland
Phone: +358-20-741-8100

• Denmark

Anritsu A/S

c/o Regus Winghouse, Ørestads Boulevard 73, 4th floor,
2300 Copenhagen S, Denmark
Phone: +45-7211-2200

• Spain

Anritsu EMEA Ltd.

Representation Office in Spain

Calle Manzanares 4, Primera planta, 28005
Madrid, Spain
Phone: +34-91-572-6761

• Austria

Anritsu Pty Ltd

Am Belvedere 10, A-1100 Vienna, Austria
Phone: +43-(0)1-717-28-710

• United Arab Emirates

Anritsu EMEA Ltd.

Anritsu A/S

Office No. 164, Building 17, Dubai Internet City
P. O. Box – 501901, Dubai, United Arab Emirates
Phone: +971-4-3758479

• India

ANRITSU INDIA PRIVATE LIMITED

6th Floor, Indiqube ETA, No.38/4, Adjacent to EMC2,
Doddanekundi, Outer Ring Road,
Bengaluru – 560048, India
Phone: +91-80-6728-1300
Fax: +91-80-6728-1301

• Singapore

ANRITSU PTE LTD

1 Jalan Kilang Timor, #07-04/06 Pacific Tech Centre
Singapore 159303
Phone: +65-6282-2400
Fax: +65-6282-2533

• Vietnam

ANRITSU COMPANY LIMITED

16th Floor, Peakview Tower, 36 Hoang Cau Street,
O Cho Dua Ward, Dong Da District, Hanoi, Vietnam
Phone: +84-24-3201-2730
Fax: +84-24-3201-2740

• P.R. China (Shanghai)

Anritsu (China) Co., Ltd.

Room 2701-2705, Tower A, New Caohejing
International Business Center No. 391 Gui Ping Road
Shanghai, 200233, P.R. China
Phone: +86-21-6237-0898
Fax: +86-21-6237-0899

• P.R. China (Hong Kong)

ANRITSU COMPANY LIMITED

Unit 1302, 13th Floor, New East Ocean Center,
No.9 Science Museum Road, TsimShaTsui East,
Kowloon, Hong Kong
Phone: +852-2301-4980
Fax: +852-2301-3545

• Japan

Anritsu Corporation

8-5, Tamura-cho, Atsugi-shi, Kanagawa, 243-0016 Japan
Phone: +81-46-296-6509
Fax: +81-46-225-8352

• South Korea

Anritsu Corporation, Limited

8F, A TOWER, 20, Gwacheondaero 7-gil, Gwacheon-si,
Gyeonggi-do, 13840, Republic of Korea
Phone: +82-2-6259-7300
Fax: +82-2-6259-7301

• Australia

Anritsu Pty. Ltd.

Unit 20, 21-35 Ricketts Road,
Mount Waverley, Victoria 3149, Australia
Phone: +61-3-9558-8177
Fax: +61-3-9558-8255

• Taiwan

ANRITSU COMPANY, INC.

7F, No. 316, Sec. 1, NeiHu Rd., Taipei 114, Taiwan
Phone: +886-2-8751-1816
Fax: +886-2-8751-1817

List Revision Date: 20250812